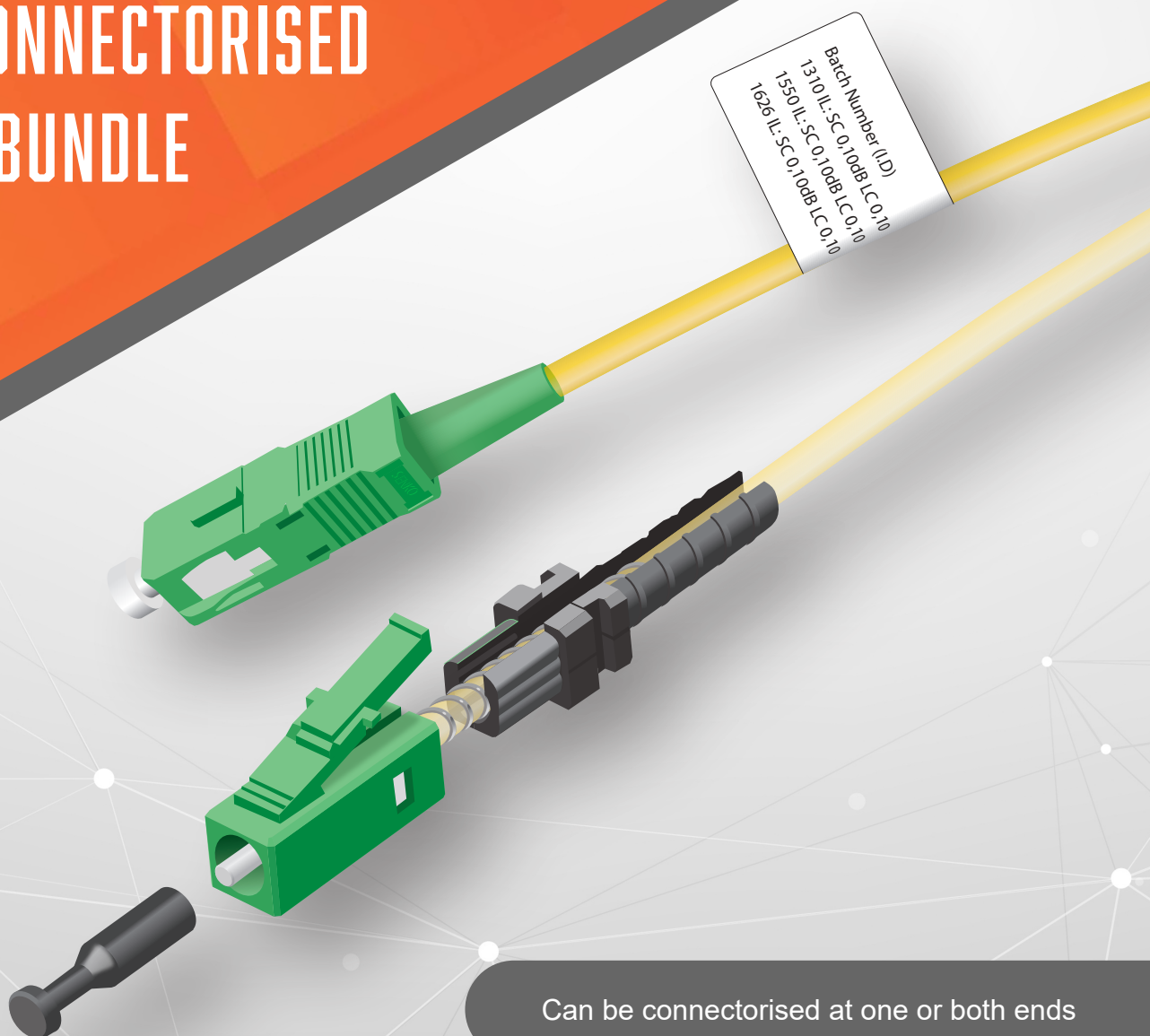




PRE-CONNECTORISED FIBRE BUNDLE



Can be connectorised at one or both ends

No fibre splicing required for the customer drop

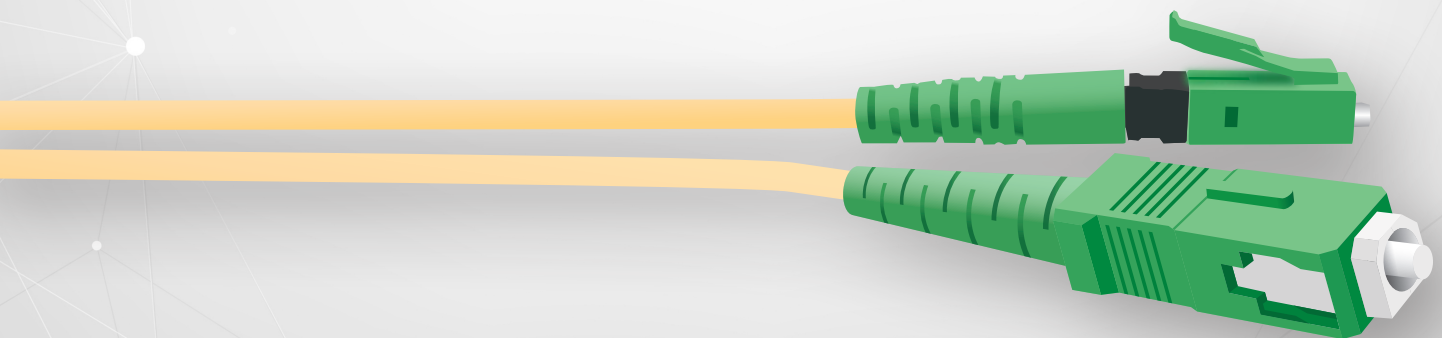
Reduced skill set & training required for the install



Emtelle QWKlink is our patented fibre bundle pre-connectorised during manufacture. The pre-connectorised fibre bundle allows for fibre connectors of specific types – SC or LC APC ferrule to be installed. This eliminates the need for splicing fibre, meaning no specialist training or tools are required for the install.

The QWKlink range of fibre is supplied with a ferrule which can be blown into a microduct with a minimum diameter of 3.5mm. The ferrule is then built up after installation often within seconds. The pre-connectorised fibre bundles can be blown from 25m up to 500m in new and existing blown fibre networks. QWKlink can be blown into microducts that have been directly buried, installed into ducts, installed along walls or into overhead Blown Fibre networks.

Emtelle's fibre bundle is renowned for its excellent blowing performance and adding a blowable pre-terminated connector is the 'ultimate' next stage for reducing FTTH costs.



QWKLINK BENEFITS

- Can be connectorised at one end or both ends
- SC & LC APC connector options available
- No fibre splicing required for the customer drop
- Extremely small storage area for the excess fibre
- Reduced skill set & training required for the install
- Massively reduced capex for installation equipment
- Cost (and space) effective compared to similar products in the market

THE FULL QWKLINK SOLUTION



QWKLINK VALUE PROPOSITION

NO CAPEX
ON SPLICING
EQUIPMENT
 {SPLICING REQUIRED}

SMALL LC
CONNECTOR

BLOW INTO
Ø3.5MM
MICRODUCT
OR LARGER

QWKLINK INSTALLATION GUIDE

1



Unpackage and remove contents of the inner reel. Keep these safe.

2



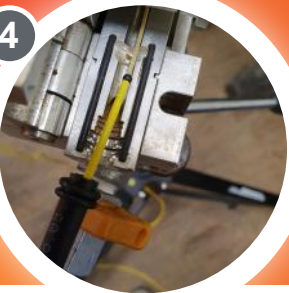
Attach fibre reel to stand, tighten the screw to secure the reel. Adjust depth of resistance screw to control speed of unwinding.

3



Feed the fibre until LFBT is completely through seals and clamp and attach fibre seal. Close drive wheels to secure.

4



Attach microduct to GS150 and secure, closing the fibre guides and tightening screw. Perform a crash test before installation.

5



Blow QWLink into the route at a maximum speed of 50 m/min.

6



Fit the SC/APC boot protection body.

7



Plug in the QWLink at the customer connection. Storing excess fibre of up to 30m.

8



Fit the LC/APC boot protection body.

9



Plug in the QWLink to the splice location, switch on the light.

CONTACT US

Emtelle Head Office

Haughhead
Hawick
TD9 8LF
United Kingdom

+44 (0) 1450 364 000

info@emtelle.com

Emtelle Scandinavia

Vardevej 140
7280 Sønder Felding
Denmark

+45 86 28 84 88

salg@emtelle.com

Emtelle GmbH

An der Flurscheide 20
99098 Erfurt
Germany

+49 (0) 361 654 330

info-de@emtelle.com

Emtelle Asia Pacific

No. 4, Jalan PJU 1A/8
Ara Damansara
47301 Petaling Jaya
Selangor, Malaysia

+60 (0)3 7845 4406

info-my@emtelle.com