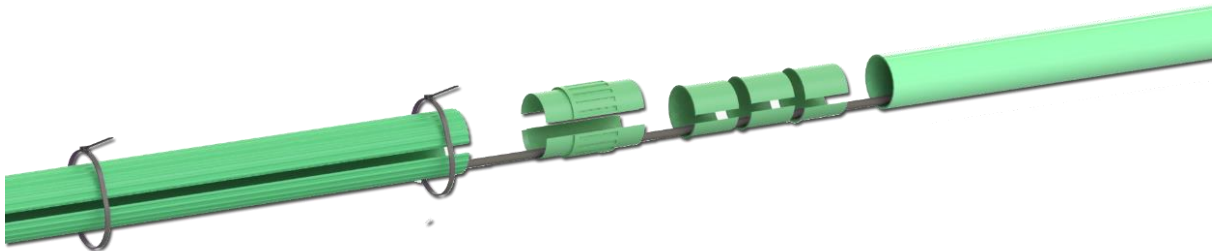


uPVC Duct Repair Kits & Split Duct (Telecommunications)

Product Description

Emtelle Split Duct & Repair Kits have been developed as a means of repairing Telecom duct installations.

The Split Duct and Repair Kit components all have a central split which allows for installation over existing cables. Each joining edge is finished with a lip and groove profile which provides a secure and reliable repair.



Split Duct

Split Duct is manufactured from uPVC and is supplied in 3m lengths to the following dimensions:

Split Duct	Split Duct OD/ID	Suitable For Duct With
53.9mm	63.2 / 53.6mm	53.9mm OD
59A	82.2 / 72.6mm	73-83mm ID
96.5mm	97.2 / 87.6mm	88-95mm ID
110mm	107.4 / 97.8mm	98-105mm ID

Each length is 3m and is split in 2 to create two half circles, which enables the cabled duct to be repaired, it can be cut to size to suit the actual repair. Where two half circles meet the wall of the duct has a tongue at one side and a groove at the other to ensure secure location of the two halves. Cable straps are used to secure the assembly.

(53.9mm Split duct is supplied with Nylon Cable Straps) 96.5 and 110mm Split Duct should be used with the corresponding repair kit.

This document is intended as a guide only. Whilst the information it contains is believed to be correct, Emtelle can take no responsibility for actions taken based on the information contained in this document. Emtelle reserves the right to make changes to this document without notice. All sales of product are subject to Emtelle's terms and conditions of sale only, which can be found on Emtelle's website.

This document is protected by copyright (c) Emtelle Group [2021]. The products depicted are protected by intellectual property rights. Any unauthorized copying of this document or of our products is prohibited and Emtelle UK Limited will take action to prevent any infringement of its rights and to claim damages for the loss that it suffers.

www.emtelle.com

Repair Kits

Standard Repair Kits include:
 2 x uPVC split Collars (4 halves),
 6 x Duct Liners
 8 x Nylon Cable straps

The combination of a Split Collar insert and up to 3 Duct liners provides compatibility for a range of duct bore diameters, dependant on the Repair Kit / Split Duct size chosen.

Attention should be paid to the split collar Inserts, these are clearly marked SMALL & LARGE diameters respectively, on each spigot end. Either spigot end will fit in to the split duct it is designed to be used with. (NB Split duct and repair kits should only be used together with the same size e.g. 96.5mm split duct with 96.5mm repair kits).

Colours

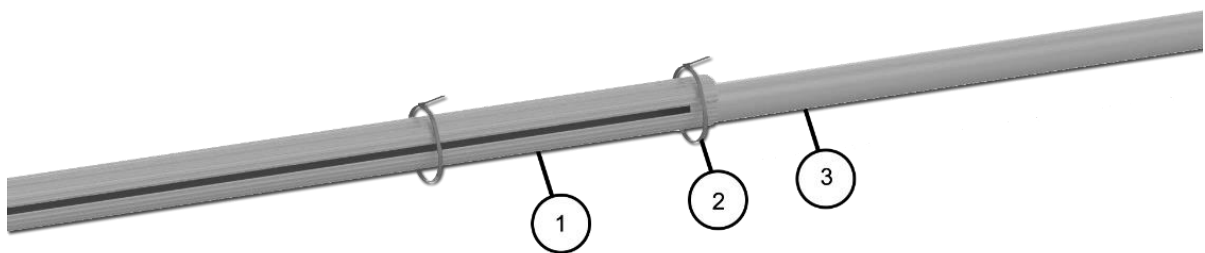
Standard Colours are **Green, Grey, Purple, White** and **Orange**.

Other colours may be available upon request

Packaging

Individual Repair Kits are supplied in a polyethylene bag and include an installation guide; these kits in turn are then packed in non-returnable woven polypropylene sacks, which are biodegradable. The sacks are designed to be stored on an even, dry and stable area; they are not to be stacked upon.

53.9mm Split Duct Repair Installation Diagram



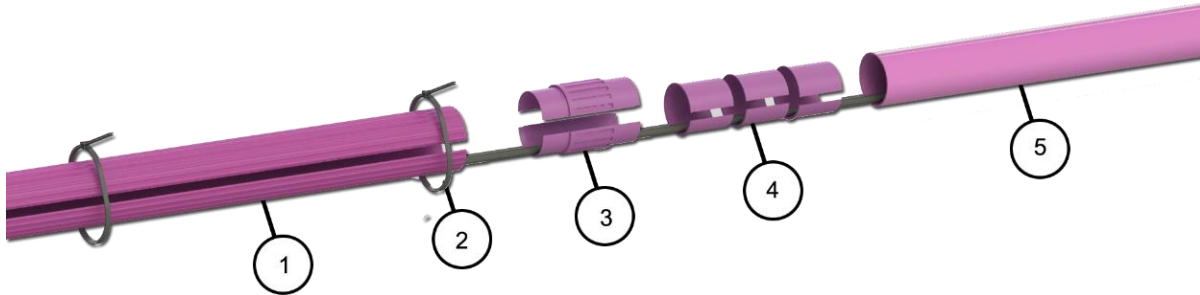
Item	Description	QTY	Included With
1	Split Duct	3m	Split Duct
2	Nylon Cable Strap	6	
3	Existing Duct	-	-

This document is intended as a guide only. Whilst the information it contains is believed to be correct, Emtelle can take no responsibility for actions taken based on the information contained in this document. Emtelle reserves the right to make changes to this document without notice. All sales of product are subject to Emtelle's terms and conditions of sale only, which can be found on Emtelle's website.

This document is protected by copyright (c) Emtelle Group [2021]. The products depicted are protected by intellectual property rights. Any unauthorized copying of this document or of our products is prohibited and Emtelle UK Limited will take action to prevent any infringement of its rights and to claim damages for the loss that it suffers.

www.emtelle.com

96.5 & 110mm Split Duct Repair Installation Diagram



Item	Description	QTY	Included With
1	Split Duct	3m	Split Duct
2	Nylon Cable Strap	8	Repair Kit
3	Split Collar Insert (pair)	2	
4	Duct Liner	6	
5	Existing Duct	-	-

Standard Dimensions, Colours & Product Codes

Standard kit sizes are available to suit 53.9mm, 96.5mm and 110mm OD Duct. Emtelle can fabricate kits for larger sizes and other applications if requested.

1) Split Duct

Nominal OD of Duct	Colour	Product	Packing QTY	Code
53.9mm	Green	1m Split Duct <i>(supplied with H strip and nylon straps)</i>	12m	70978
	Grey	3m Split Duct <i>(supplied with 6no nylon cable straps)</i>	330m	71829
	Purple	3m Split Duct <i>(supplied with 6no nylon cable straps)</i>	360m	74438
59A	Grey	3m Split Duct	3m	75884
		Repair Kit	20	75885
96.5mm	Green	3m Split Duct	168m	2393
		Repair Kit	20	2226
	Grey	3m Split Duct	168m	3286
		Repair Kit Grey	20	3285
	White	3m Split Duct	168m	3436
		Repair Kit White	20	3435
110mm	Green	3m Split Duct	126m	4507T
		Repair Kit Green	20	4508
	Grey	3m Split Duct	126m	4426
		Repair Kit	20	4427
	Purple	3m Split Duct	126m	74535
		Repair Kit	20	74439

This document is intended as a guide only. Whilst the information it contains is believed to be correct, Emtelle can take no responsibility for actions taken based on the information contained in this document. Emtelle reserves the right to make changes to this document without notice. All sales of product are subject to Emtelle's terms and conditions of sale only, which can be found on Emtelle's website.

This document is protected by copyright (c) Emtelle Group [2021]. The products depicted are protected by intellectual property rights. Any unauthorized copying of this document or of our products is prohibited and Emtelle UK Limited will take action to prevent any infringement of its rights and to claim damages for the loss that it suffers.

EF450-002

Issue Number: 6

Page 4 of 4

2) Split Bends (Comes with 2 split couplers)

Nominal OD of Duct	Colour	Product	Packing QTY	Code
53.9mm	Green	53.9mm 45deg Green Split Bend	50	71737
53.9mm	Green	53.9mm 90deg Green Split Bend	50	70976

3) Split Coupler

Nominal OD of Duct	Colour	Product	Packing QTY	Code
53.9mm	Green	53.9mm Green Split Duct Coupler	50	70977

This document is intended as a guide only. Whilst the information it contains is believed to be correct, Emtelle can take no responsibility for actions taken based on the information contained in this document. Emtelle reserves the right to make changes to this document without notice. All sales of product are subject to Emtelle's terms and conditions of sale only, which can be found on Emtelle's website.

This document is protected by copyright (c) Emtelle Group [2021]. The products depicted are protected by intellectual property rights. Any unauthorized copying of this document or of our products is prohibited and Emtelle UK Limited will take action to prevent any infringement of its rights and to claim damages for the loss that it suffers.

www.emtelle.com