

 **PowerProtect⁺**
uPVC Duct End Caps**Product Description**

Emtelle Endcaps & Inserts provide a means of temporary sealing of duct systems during construction to prevent the ingress of dirt and surface water.

Application

The application areas covered within this document are: Telecommunications, Power and General Purpose.

Size ranges from 53.9mm to 250mm OD with interference fit joints. Endcaps fit over the spigot ends of ducts. Inserts fit inside either the spigot or socket end.

Other sizes may be available upon request.

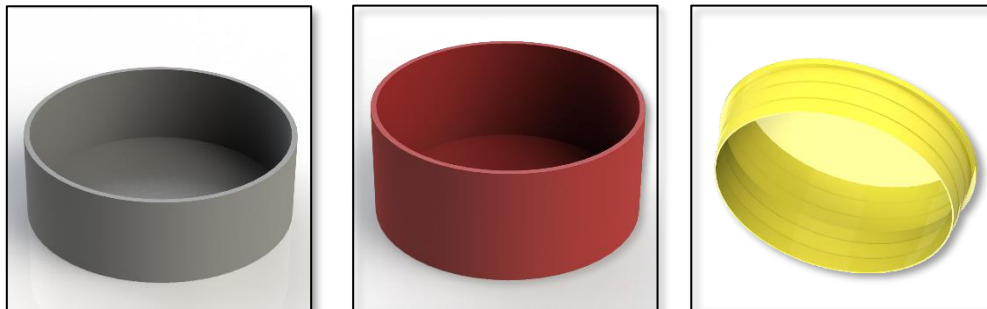
Material & Technical data

Raw Materials are PE and other additives suitable for the required properties of the finished product.

Colours

Standard colours are **Black, Yellow, Red, Green & Grey**

Other colours available upon request.



This document is intended as a guide only. Whilst the information it contains is believed to be correct, Emtelle can take no responsibility for actions taken based on the information contained in this document. Emtelle reserves the right to make changes to this document without notice. All sales of product are subject to Emtelle's terms and conditions of sale only, which can be found on Emtelle's website.

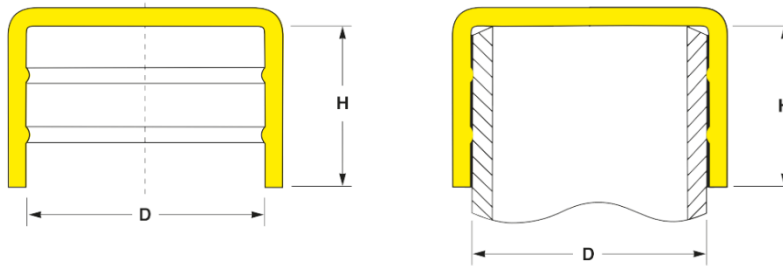
This document is protected by copyright (c) Emtelle Group [2021]. The products depicted are protected by intellectual property rights. Any unauthorized copying of this document or of our products is prohibited and Emtelle UK Limited will take action to prevent any infringement of its rights and to claim damages for the loss that it suffers.

www.emtelle.com

Standard Dimensions, Colours & Product Codes

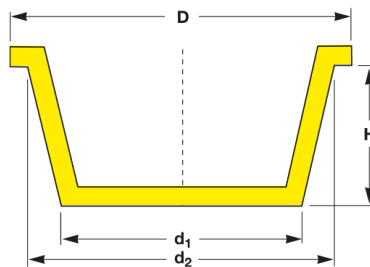
End Caps:

Product Code	Duct	Dimensions (D) mm	Dimensions (H) mm	Colour	Packing QTY
1902	53.9mm Spigot	54.0	28.4	Yellow	250
1740	88.9mm Spigot	88.9	36.0	Yellow	250
1875	96.5mm Spigot	96.5	39.0	Red	250
3850	110mm Spigot	110.0	39.0	Yellow	175
9232	125mm Spigot	125.0	40.0	Grey	100
5029	160mm Spigot	160.0	40.0	Grey/Yellow	60
71671	180mm Spigot	180.0	40.0	Yellow	50
9233	200mm Spigot	200.0	40.0	Grey	10
71588	225mm Spigot	225.00	40.0	Yellow	10
70946	250mm Spigot	250.00	40.0	Grey	10



Inserts:

Product Code	Duct	Dimensions (D1-D2) mm	Dimensions (H) mm	Colour	Packing QTY
-	110/102mm Spigot	101.5 - 104.0	17.0	Yellow	-
-	110/102mm Socket	106.0 - 111.0	23.0	Yellow	-
-	125/117mm Spigot	-	-	Yellow	-
-	125/117mm Socket	124.0 - 127.0	30.0	Yellow	-
72179	160/150mm Spigot	149.0 - 153.0	30.1	Yellow	130
-	160/150mm Socket	159.0 - 161.5	38.0	Yellow	-
-	180/169mm Spigot	168.0 - 175.0	38.0	Yellow	-
-	180/169mm Socket	179.0 - 185.0	38.0	Yellow	-
74897	200/188mm Spigot	187.5 - 191.5	21.7	Yellow	130
-	200/188mm Socket	223.0 - 230.5	38.0	Yellow	-
-	225/213mm Spigot	209.0 - 213.0	26.5	Yellow	-
-	225/213mm Socket	223.0 - 230.5	38.0	Yellow	-
-	250/237mm Spigot	232.0 - 239.0	46.0	Yellow	-
-	250/237mm Socket	249.0 - 254.0	46.0	Yellow	-



This document is intended as a guide only. Whilst the information it contains is believed to be correct, Emtelle can take no responsibility for actions taken based on the information contained in this document. Emtelle reserves the right to make changes to this document without notice. All sales of product are subject to Emtelle's terms and conditions of sale only, which can be found on Emtelle's website.

This document is protected by copyright (c) Emtelle Group [2021]. The products depicted are protected by intellectual property rights. Any unauthorized copying of this document or of our products is prohibited and Emtelle UK Limited will take action to prevent any infringement of its rights and to claim damages for the loss that it suffers.

Packaging and Labelling

End Caps are supplied in non-returnable woven polypropylene sacks, which are biodegradable. The sacks are designed to be stored on an even, dry and stable area; they are not to be stacked upon.

This document is intended as a guide only. Whilst the information it contains is believed to be correct, Emtelle can take no responsibility for actions taken based on the information contained in this document. Emtelle reserves the right to make changes to this document without notice. All sales of product are subject to Emtelle's terms and conditions of sale only, which can be found on Emtelle's website.

This document is protected by copyright (c) Emtelle Group [2021]. The products depicted are protected by intellectual property rights. Any unauthorized copying of this document or of our products is prohibited and Emtelle UK Limited will take action to prevent any infringement of its rights and to claim damages for the loss that it suffers.

www.emtelle.com