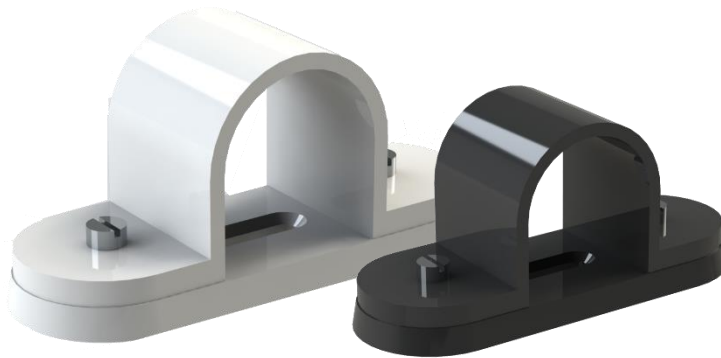


 PowerProtect+™  
Conduit Wall Fixings

**Product Description**

Emtelle Conduit Wall Fixings are supplied within an Integrated Management System, incorporating internationally recognised Standards including ISO 9001:2015, ISO 14001:2015 and ISO 45001:2018.



**Application**

Conduit Wall Fixings are used to secure duct to the side of the building, e.g. leading up to the meter box/connection point.

**Colours**

Standard colours are **Black** and **White**.

**Features**

- Secure duct to the side of the building.
- Supplied with fixing screws.
- Removable cover – suitable for retrofitting/replacing.

**Standard Dimensions & Product Codes**

General					
Code	Description	QTY			Colour
73208	Saddle 2-Piece (25mm Conduit)	100			Black
71758	Saddle 2-Piece (25mm Conduit)	100			White
73209	Saddle 2-Piece (32mm Conduit)	100			Black
5472	Saddle 2-Piece (38mm Conduit)	100			White

This document is intended as a guide only. Whilst the information it contains is believed to be correct, Emtelle can take no responsibility for actions taken based on the information contained in this document. Emtelle reserves the right to make changes to this document without notice. All sales of product are subject to Emtelle's terms and conditions of sale only, which can be found on Emtelle's website.

This document is protected by copyright (c) Emtelle Group [2021]. The products depicted are protected by intellectual property rights. Any unauthorized copying of this document or of our products is prohibited and Emtelle UK Limited will take action to prevent any infringement of its rights and to claim damages for the loss that it suffers.

**Packaging and Labelling**

---

The conduit wall fixings are supplied in biodegradable polypropylene bags which are designed to be stored on even, stable ground. All packaging should be recycled locally.

This document is intended as a guide only. Whilst the information it contains is believed to be correct, Emtelle can take no responsibility for actions taken based on the information contained in this document. Emtelle reserves the right to make changes to this document without notice. All sales of product are subject to Emtelle's terms and conditions of sale only, which can be found on Emtelle's website.

This document is protected by copyright (c) Emtelle Group [2021]. The products depicted are protected by intellectual property rights. Any unauthorized copying of this document or of our products is prohibited and Emtelle UK Limited will take action to prevent any infringement of its rights and to claim damages for the loss that it suffers.

[www.emtelle.com](http://www.emtelle.com)