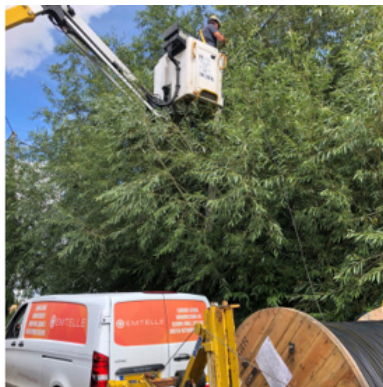




# OVERHEAD NETWORK SOLUTIONS FOR FIBRE CABLE



GLOBAL MANUFACTURER OF PRE-CONNECTORISED, BLOWN FIBRE CABLE & DUCTED NETWORK SOLUTIONS

# CONTENT

INTRODUCTION	4
SOLUTIONS	6
SOLUTION & TRAINING	7
INSTALLATION GUIDELINES	8
DISTRIBUTION CLOSURES	20
CTU - CUSTOMER TERMINATION UNIT	21
48F ULW DROP CABLE	22
AERIAL DROP CABLE 3.4MM	23
QWKCONNECT	24
EMTELLE OVERHEAD ACCESSORIES	25



FibreFlow 



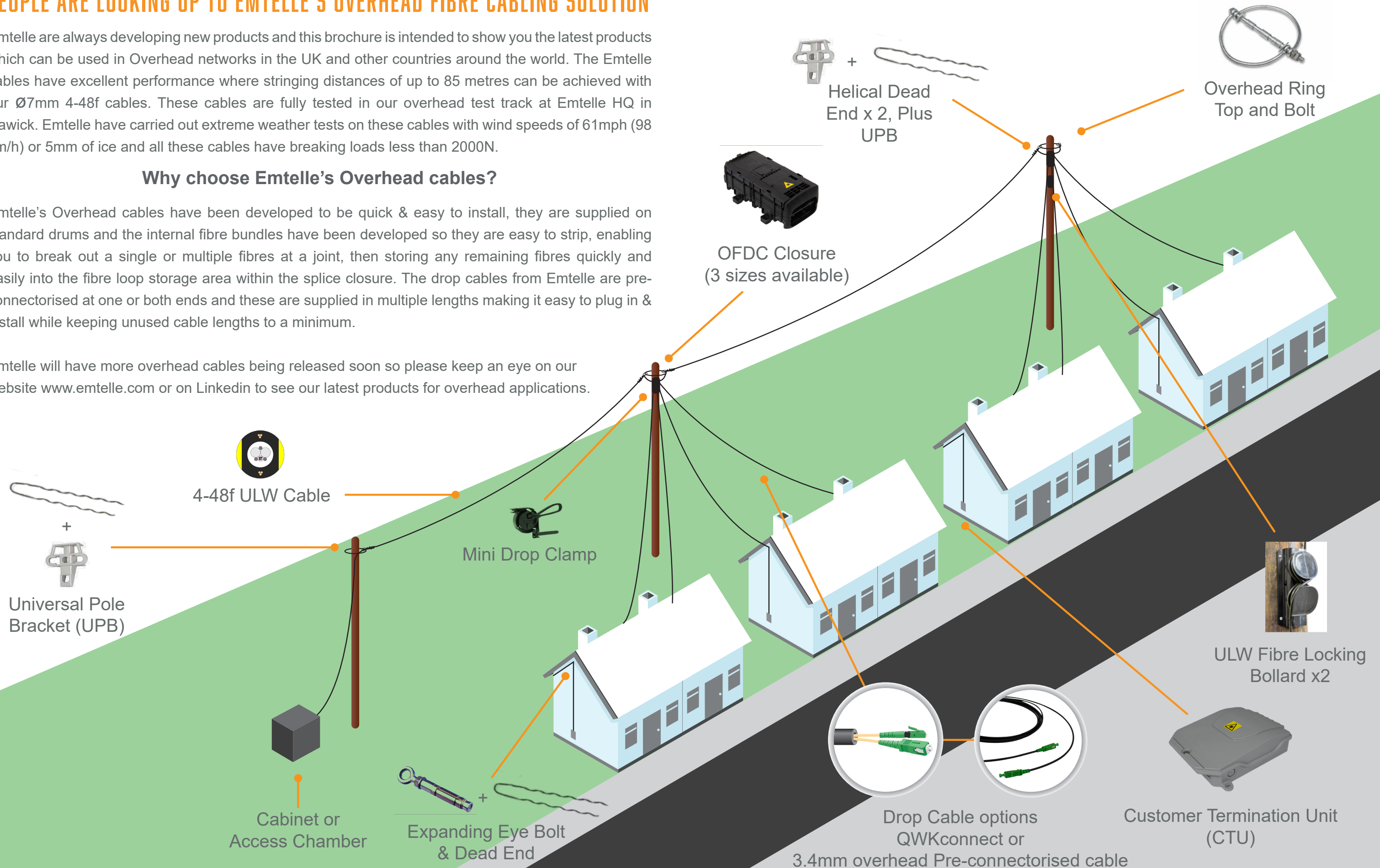
## PEOPLE ARE LOOKING UP TO EMTELLE'S OVERHEAD FIBRE CABLING SOLUTION

Emtelle are always developing new products and this brochure is intended to show you the latest products which can be used in Overhead networks in the UK and other countries around the world. The Emtelle cables have excellent performance where stringing distances of up to 85 metres can be achieved with our Ø7mm 4-48f cables. These cables are fully tested in our overhead test track at Emtelle HQ in Hawick. Emtelle have carried out extreme weather tests on these cables with wind speeds of 61mph (98 km/h) or 5mm of ice and all these cables have breaking loads less than 2000N.

### Why choose Emtelle's Overhead cables?

Emtelle's Overhead cables have been developed to be quick & easy to install, they are supplied on standard drums and the internal fibre bundles have been developed so they are easy to strip, enabling you to break out a single or multiple fibres at a joint, then storing any remaining fibres quickly and easily into the fibre loop storage area within the splice closure. The drop cables from Emtelle are pre-connectorised at one or both ends and these are supplied in multiple lengths making it easy to plug in & install while keeping unused cable lengths to a minimum.

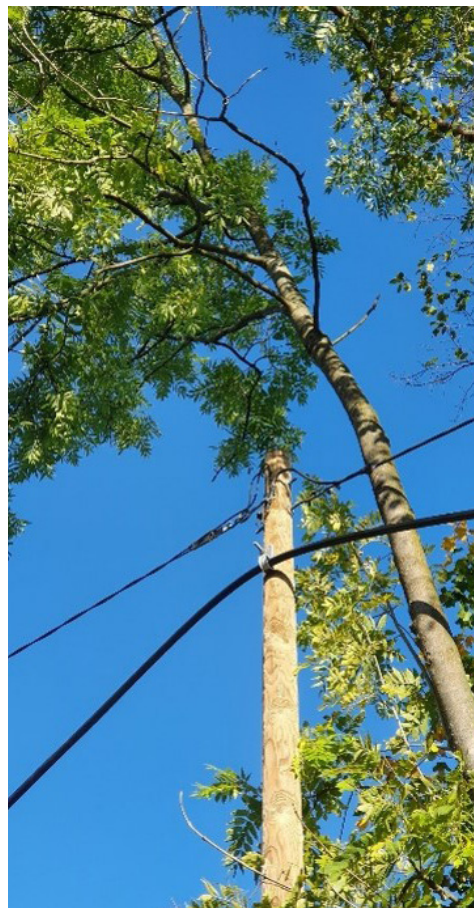
Emtelle will have more overhead cables being released soon so please keep an eye on our website [www.emtelle.com](http://www.emtelle.com) or on LinkedIn to see our latest products for overhead applications.





## SOLUTIONS

- ✱ **SUITABLE FOR COST-EFFECTIVE EXPANSION OF LOCAL CONNECTIONS**
- ✱ **MAX COST REDUCTION COMPARED TO CONVENTIONAL CIVIL ENGINEERING**
- ✱ **USED IN AREAS WHERE CIVIL ENGINEERING IS NOT FEASIBLE:  
FORESTS, HILLS, MOUNTAINS, NATURE / WATER PROTECTION AREAS**
- ✱ **USE IN VARIOUS INFRASTRUCTURES STEEL, CONCRETE & WOODEN POLES**
- ✱ **IDEALLY SUITED FOR CONNECTING ISOLATED, RURAL COURTYARDS  
WHERE CIVIL ENGINEERING IS NOT AN OPTION**



## EMTELLE'S OVERHEAD NETWORK SOLUTIONS

Emtelle has a large range of solutions that can be installed onto Overhead Pole networks for FTTX applications. It is important that the correct cable, closures and accessories are chosen for your network deployment. Emtelle looks at a typical installation scenario that is used for FTTH deployments in the UK.

As well as choosing the correct materials, it is of vital importance that all cables and closures used are approved by the network owner / operator and that all installation teams are fully trained and accredited to work on overhead network infrastructure as well as compliant to the relevant health & safety requirement for working at heights.

Emtelle's Training Partner CTTS are at hand to assist in all your training needs to ensure you have a safe and successful cable installation in Overhead Networks.

Our partnership with CTTS is the perfect solution to your FTTX needs. Optimise the performance of your network with our expertise in developing innovative solutions and CTTS' experience in delivering all aspects of cabling and telecoms technology training.

Training packages cover all the latest fibre, ducting and cabling solutions worldwide, including Emtelle solution-specific training. A wide range of PIA-specific courses is also available which incorporate over 25 years experience of supplying training packages to major network operators. Whether you are an operator or installation contractor, we will design a fully bespoke package to meet your individual needs:

- ✱ Installation and network maintenance
- ✱ Compliance with industry regulations
- ✱ Refresher training for specific needs
- ✱ Tailored for technical, sales or administration personnel

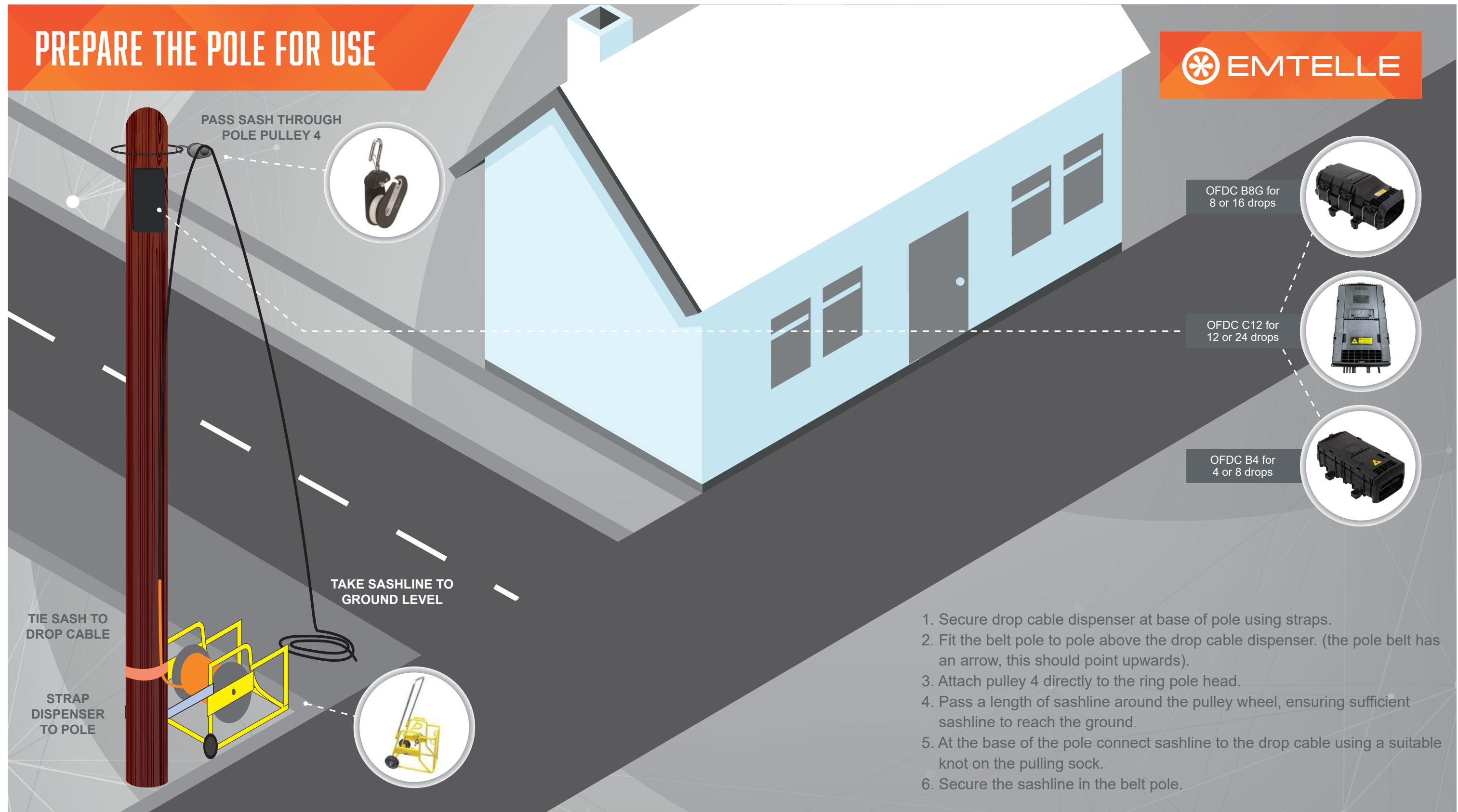
  
Cable Telecommunications  
Training Services Ltd





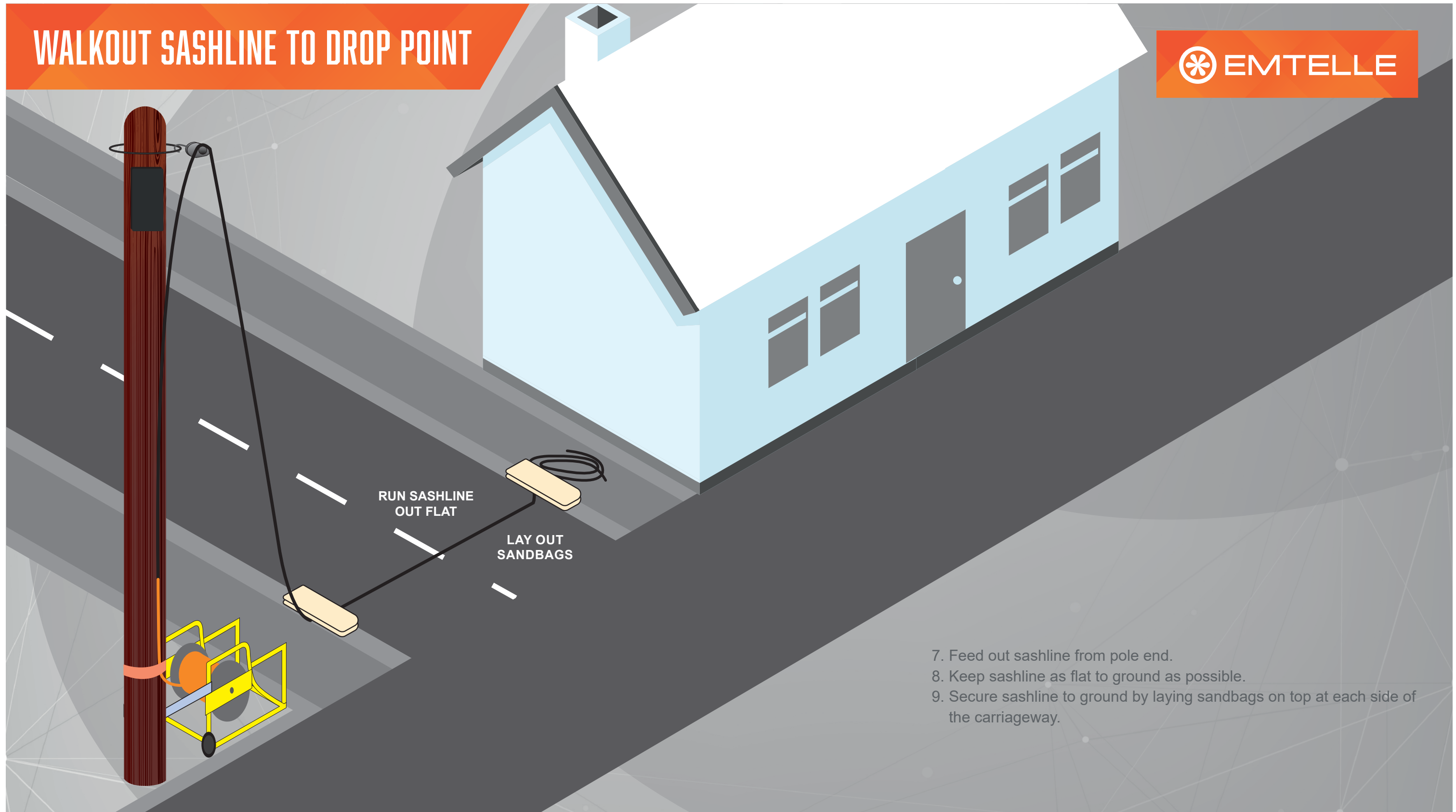
# INSTALLATION GUIDELINES

## PREPARE THE POLE FOR USE



# INSTALLATION GUIDELINES

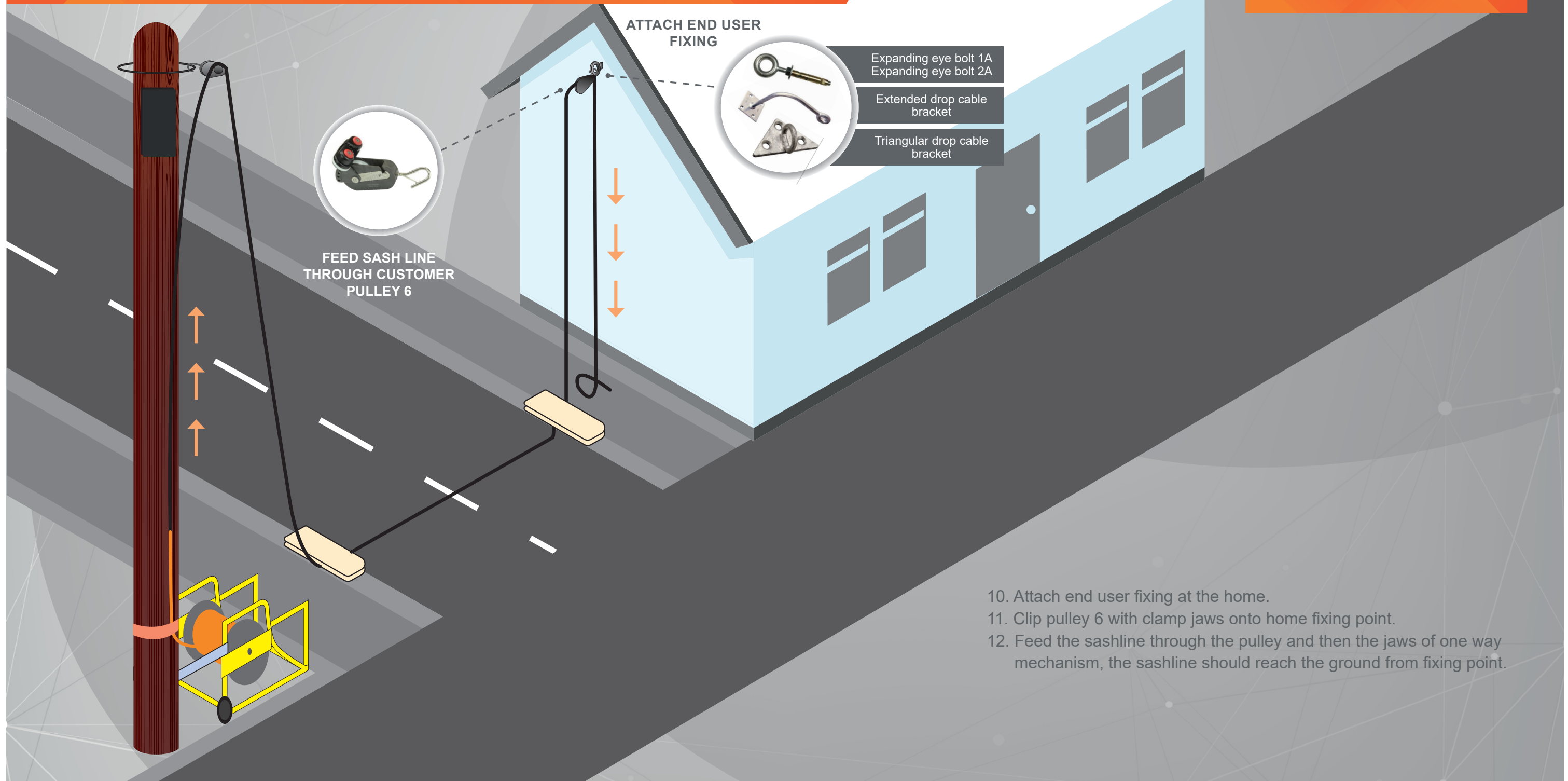
## WALKOUT SASHLINE TO DROP POINT



7. Feed out sashline from pole end.
8. Keep sashline as flat to ground as possible.
9. Secure sashline to ground by laying sandbags on top at each side of the carriageway.

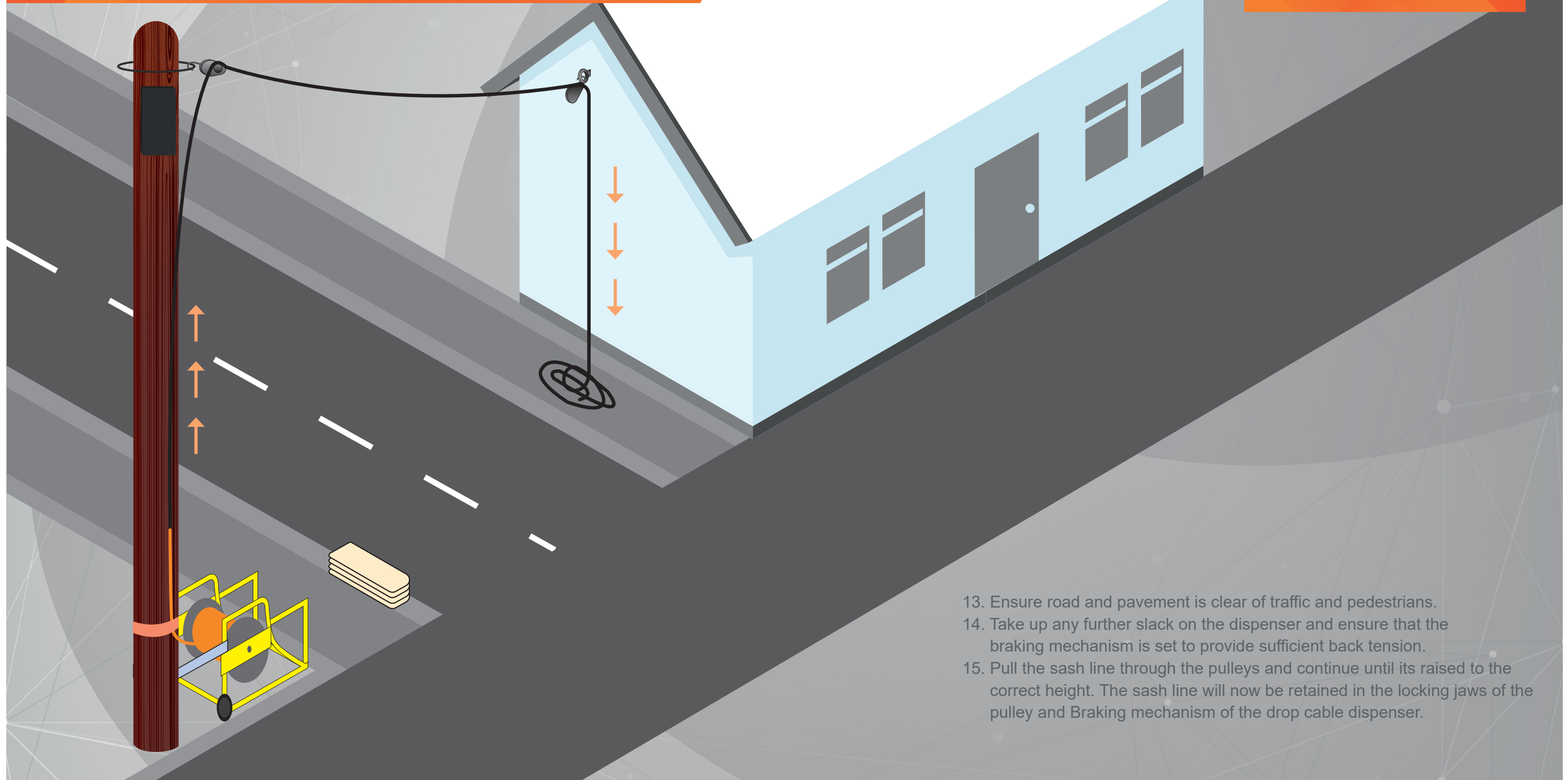
# INSTALLATION GUIDELINES

## SASHLINE, PULLEY AND DROP CABLE AT END USER'S PREMISES



# INSTALLATION GUIDELINES

## PULL/LIFT SASH LINE FROM CUSTOMER PREMISES

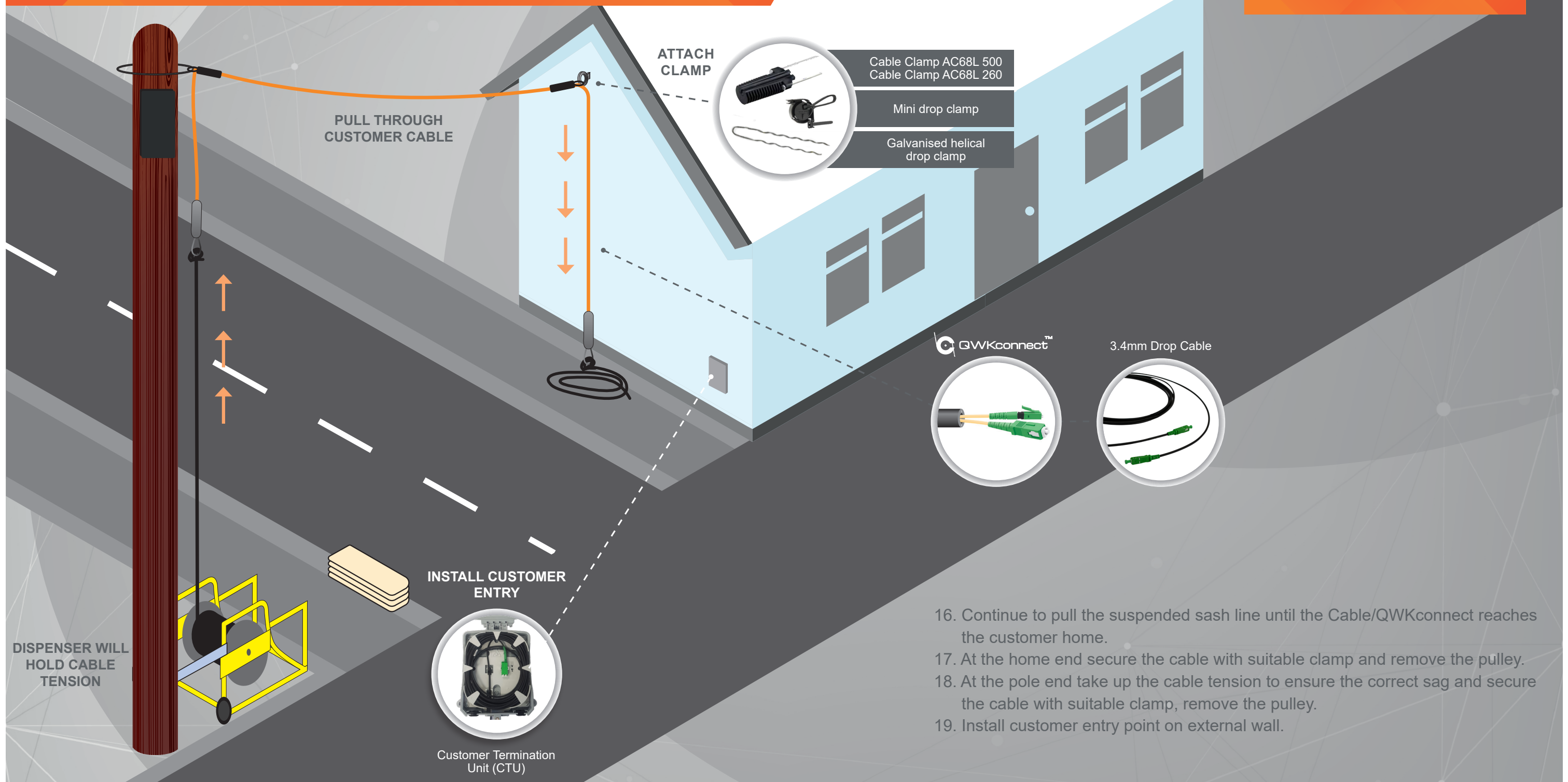


13. Ensure road and pavement is clear of traffic and pedestrians.
14. Take up any further slack on the dispenser and ensure that the braking mechanism is set to provide sufficient back tension.
15. Pull the sash line through the pulleys and continue until its raised to the correct height. The sash line will now be retained in the locking jaws of the pulley and Braking mechanism of the drop cable dispenser.



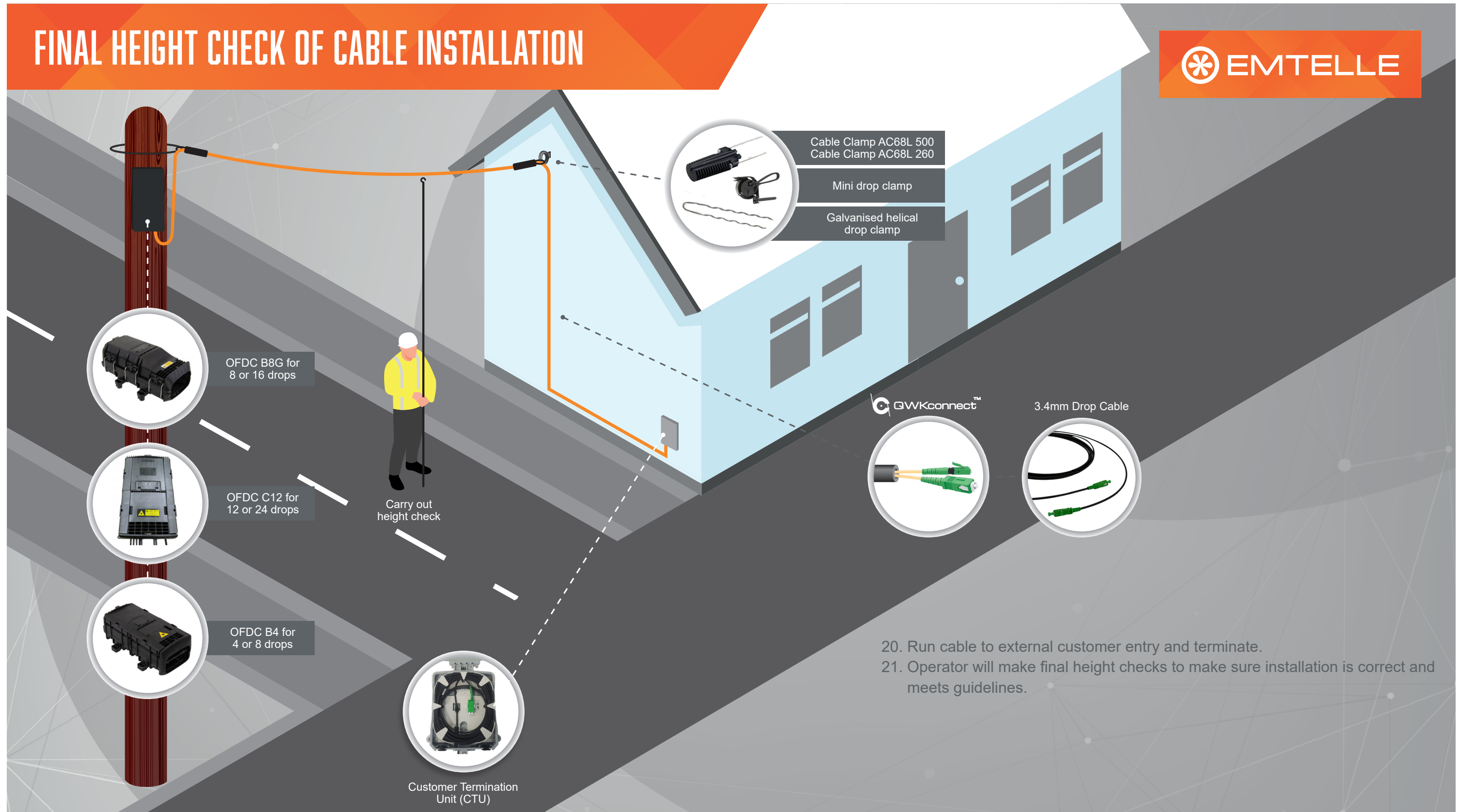
# INSTALLATION GUIDELINES

## PULL/LIFT SASH LINE FROM CUSTOMER PREMISES PT2



# INSTALLATION GUIDELINES

## FINAL HEIGHT CHECK OF CABLE INSTALLATION





# DISTRIBUTION/DROP CLOSURES - OVERVIEW

The OFDC range is the environmentally sealed enclosure for fibre management system that provides the function of splicing patching and passive component integration in the external network.

- Advanced gel sealing technology ensures fast and easy field handling without a need for special tools
- Individual access to drop cable connection and separate zones for looped cable storage for cable types
- Compact and modular design suited for wraparound drop cable installation, enabling faster deployments
- Easy pass-through cabling and integration of optical components, even at later deployment stages



## Distribution/Drop closures - Details

### Splice capacity OFDC B8G

72 splices

For repair up to 96 splices

Micro duct and cable diameters

2 main cables: 11.5-15 mm

2 Branch cables: 8-11 mm

8 drop cables: 0-6mm SC/APC

16 drop cable LC/APC

### Splice capacity OFDC C12

96 splices

For repair up to 96 splices

Micro duct and cable diameters

Feeder cable 5.5-17.5 mm

12 Flat 8.0 x 4.5 mm

12 Round 1.5-6mm SC/APC

24 Round 2.0-6mm LC/APC

### Splice capacity OFDC A4

24 splices

For repair up to 48 splices

Micro duct and cable diameters

Feeder cables 4.5-12 mm

4 drop micro ducts 0-6mm SC/APC

8 drop micro ducts 0-6mm LC/APC



# CUSTOMER TERMINATION UNIT - CTU

## Product Description

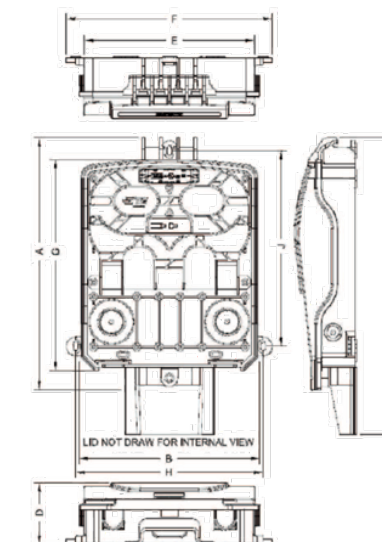
The CO-WMFE-FTTX is a wall mounted fibre management system for any broadband network architecture which uses optical fibre to provide all or part of the local loop used for last mile telecommunications. The 1 door lift off opening provides the installer to access all the internal components. The door is lockable using a single screw.

## Features & Benefits

- Compact and modular wall-mountable customer termination box
- Fibre splices can be managed in single circuits using fibre organizing systems
- Cable coming into the enclosure are hidden by protective tubing which is secured to the external wall
- Three fixing holes located on the box so it can be secured tightly to the external wall
- Splicing and Pre-Connectorised options available

## Technical Information

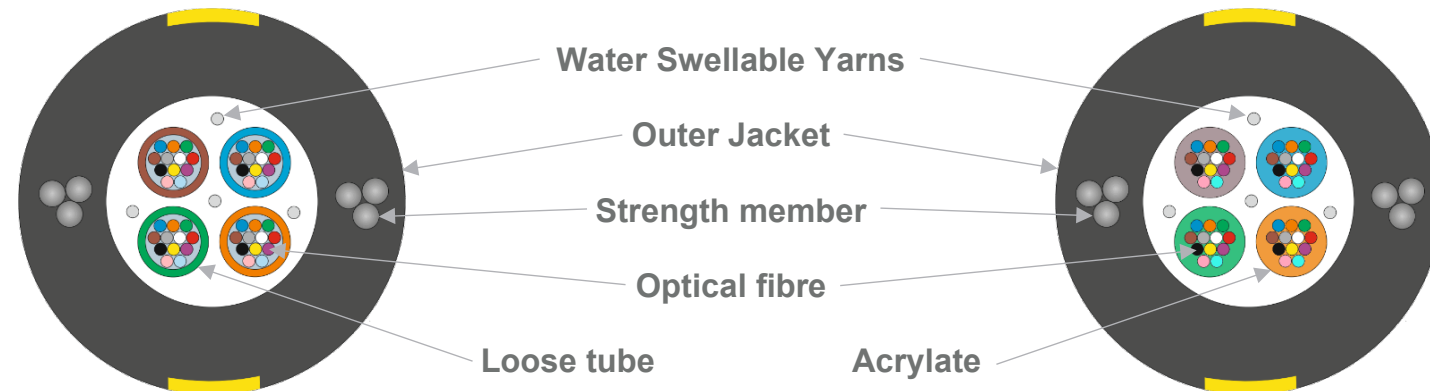
- Height cover - 217mm
- Width cover - 155mm
- Height box plus cable cover cap - 254mm
- Depth - 53mm
- Width box - 146mm
- Width box plus fixings - 177mm
- Height box - 181mm
- Fixing hole - 161mm
- Fixing hole vertically - 168mm



# 48F ULW DISTRIBUTION CABLE 7MM

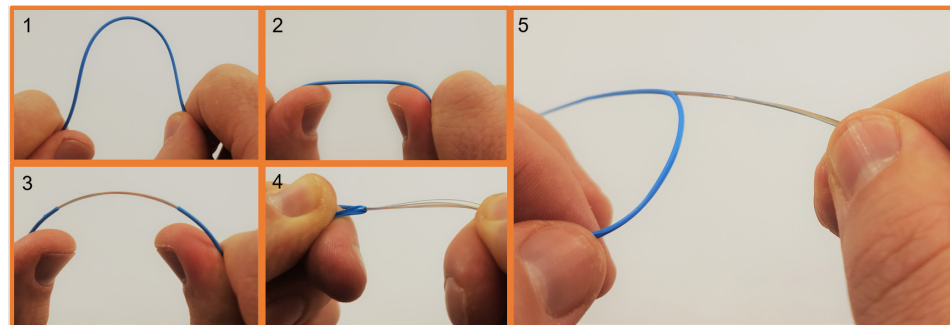
## Product Description

ULW Cables are designed to be compact (7mm diameter), Lightweight <38Kg/km and easy to install. The ULW is designed to be installed on distributions line up to 11kV and comes in two designs a dry acrylate tube or soft easy strip tube with water-blocking gel.



## Easy Strip Loose tube

Easily remove the loose tube by applying tension on it. Jacket peels away for easy stripping and midspan access.



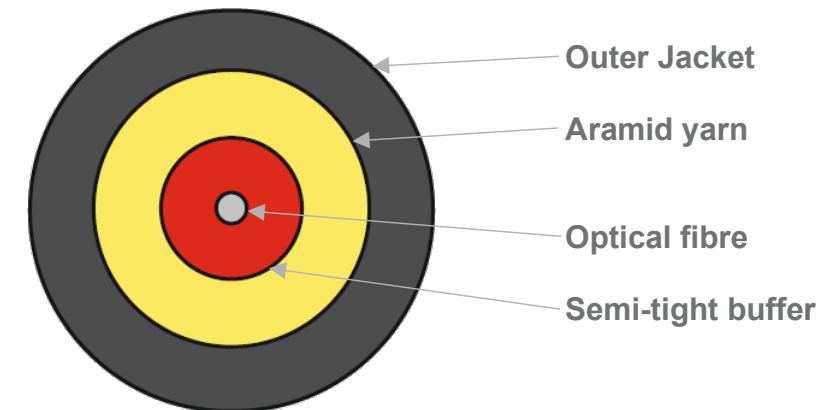
## Technical Information

<b>Jacket details:</b>	Black UV resistant with 2 yellow stripes
<b>Outer Diameter:</b>	7mm
<b>Span distance:</b>	Up to 80m (subject to environmental loading conditions)
<b>Fiber type:</b>	Single Mode G.652D
<b>Breaking load:</b>	<2000N
<b>Fibre count:</b>	4 – 48F
<b>Operating Temperature:</b>	-30°C tot +70°C

# AERIAL DROP CABLE 3.4MM

## Product Description

A small, lightweight cable which can be used for final FTTX aerial or façade connections. This cable solution can be pre-connectorized, reducing splicing costs and installation time as well as simplifying the installation.



## Features & Benefits

- UV resistant outer sheath --> suitable for installation outdoors
- Small, lightweight, and flexible
- Easy strippable gel free tight buffer tube
- Fast and easy installation
- Designed to be secured overhead between pole to the customer drop location
- Expected lifetime of 20 years

## Technical Information

<b>Jacket details:</b>	Black UV resistant
<b>Outer diameter:</b>	3.4mm
<b>Span distance:</b>	Up to 80m (subject to environmental loading conditions)
<b>Fibre type:</b>	Single Mode G.657A2
<b>Breaking load:</b>	<2000N
<b>Operating Temperature:</b>	-10°C tot +50°C



# QWKCONNECT - PRE-CONNECTORISED

## Product Description

QWKconnect - Emtelle's per-connectorised fibre optical cable solutions saves customers & installers time and installation cost by eliminating the need for specialist training or tool by making the connection Plug & Play.

## Features & Benefits

- Supplied on small cardboard reel with test certificate
- No splicing required – just Plug and Play
- Reduced skill set & training required for the install
- Massively reduced capex for installation equipment
- Store the excess fibre in the Customer Termination Unit (CTU)
- Build the connector in less than 30 seconds
- 50m span distance, up to 80km/h wind speed, 20 degrees temperature change

## Technical Information

- Lengths from 25m to 500m in 25m increments.
- SC or LC APC connectors available



Parameter	Requirement			
	SC/UPC	SC/APC 8°	LC/UPC	LC/APC 8°
Specification	IEC 60874	IEC 60874	IEC 61754	IEC 61754
Test methods	IEC 61300	IEC 61300	IEC 61300	IEC 61300
Connector body colour	Blue	Green	Blue	Green
Connector boot colour	Blue	Green	Blue	Green
Insertion loss, typical (dB)	0.20	0.20	0.20	0.20
Insertion loss, maximum (dB)	0.30	0.30	0.30	0.30
Return loss, typical (dB)	52	62	52	62
Return loss, minimum (dB)	50	60	50	60
Temperature, in operation (°C)	- 40 ~ + 75			
Temperature, storage (°C)	- 55 ~ + 85			

# EMTELLE OVERHEAD ACCESSORIES

## Clamps, House fixings, Pole fixings and banding

The following fittings are used to install Emtelle aerial/overhead blown fibre cables to poles. For methods of use, consult Emtelle training department and manuals.



**Cable Clamp AC68L 260. Product code 9248**  
**Cable Clamp AC68L 500. Product code 71980**

Wedge type clamp used for 7mm aerial fibre optic cables  
 AC68L260 used from pole to house  
 AC68L500 used for support and tension of the main route



**Galvanised helical drop clamp. Product code 75013**

Galvanized steel rods with a gritted length are helically formed to create the GSDE product range. The spiral dead-end is delivered with a colour code on both ends and an identification label.



**Mini drop clamp. Product 75467**

The FTTH drop clamp mini is used for the dead-ending of 3 to 4mm aerial round drop cables with flexible insulation sheath where spans do not exceed 70 m.



**Triangular fixing bracket. Product code 75362**

These brackets are primarily used where the wooden front/soffit is the only suitable place for the bracket to be attached. In this case it is advisable that screws of a substantial length are used



**Expanding bolt 2A. Product code 75118**

Overhead single point fixing bolt.

## EMTELLE OVERHEAD ACCESSORIES

Clamps, House fixings, Pole fixings and banding



**Expanding bolt 1A. Product code 75117**

Overhead single point fixing bolt.



**Extended drop cable bracket. Product code 74644**

Designed to attach a drop wire clamp to timber or brickwork at end users' premises where additional height clearance is required e.g. a Bungalow.



**Universal Pole Bracket UPB. Product code 9246**

A galvanized bracket suitable for anchoring cable clamps and twist grips holding overhead fibre optic cables



**Bolt 16x300mm. Product code 9253**

Fixing through bolt for wooden poles



**Overhead ring top with fixing bolt. Product 74422**

To support aerial clamps on the telegraph pole



**Fibre Locking mechanism. Product code 74523**

Used in conjunction with Emtelle Ultra Lightweight fibre cable.

## EMTELLE OVERHEAD ACCESSORIES

Clamps, House fixings, Pole fixings and banding



**Steel banding. Product code 9254 (SS201)**  
**Steel banding. Product code 72887 (SS304)**

Steel banding to mount pole furniture to all types of pole.



**Buckles for steel banding BIB20. Product code 9255**

Buckles for securing the steel banding to the pole, secured with tensioning tool.



**Steel banding tensioning tool. Product code 9256**

Tool suitable for tensioning the steel banding.

FibreFlow 





## CONTACT US

### Emtelle Head Office


Haughead  
Hawick  
TD9 8LF  
United Kingdom

 +44 (0) 1450 364 000

 [info@emtelle.com](mailto:info@emtelle.com)

### Emtelle GmbH

An der Flurscheide 20  
99098 Erfurt  
Germany

 +49 (0) 361 654 330

 [info-de@emtelle.com](mailto:info-de@emtelle.com)

### Emtelle Scandinavia

Vardevej 140  
7280 Sønder Felding  
Denmark

 +45 86 28 84 88

 [salg@emtelle.com](mailto:salg@emtelle.com)

### Emtelle Asia Pacific

No. 4, Jalan PJU 1A/8  
Ara Damansara  
47301 Petaling Jaya  
Selangor, Malaysia

 +60 (0)3 7845 4406

 [info-my@emtelle.com](mailto:info-my@emtelle.com)



[WWW.EMTELLE.COM](http://WWW.EMTELLE.COM)