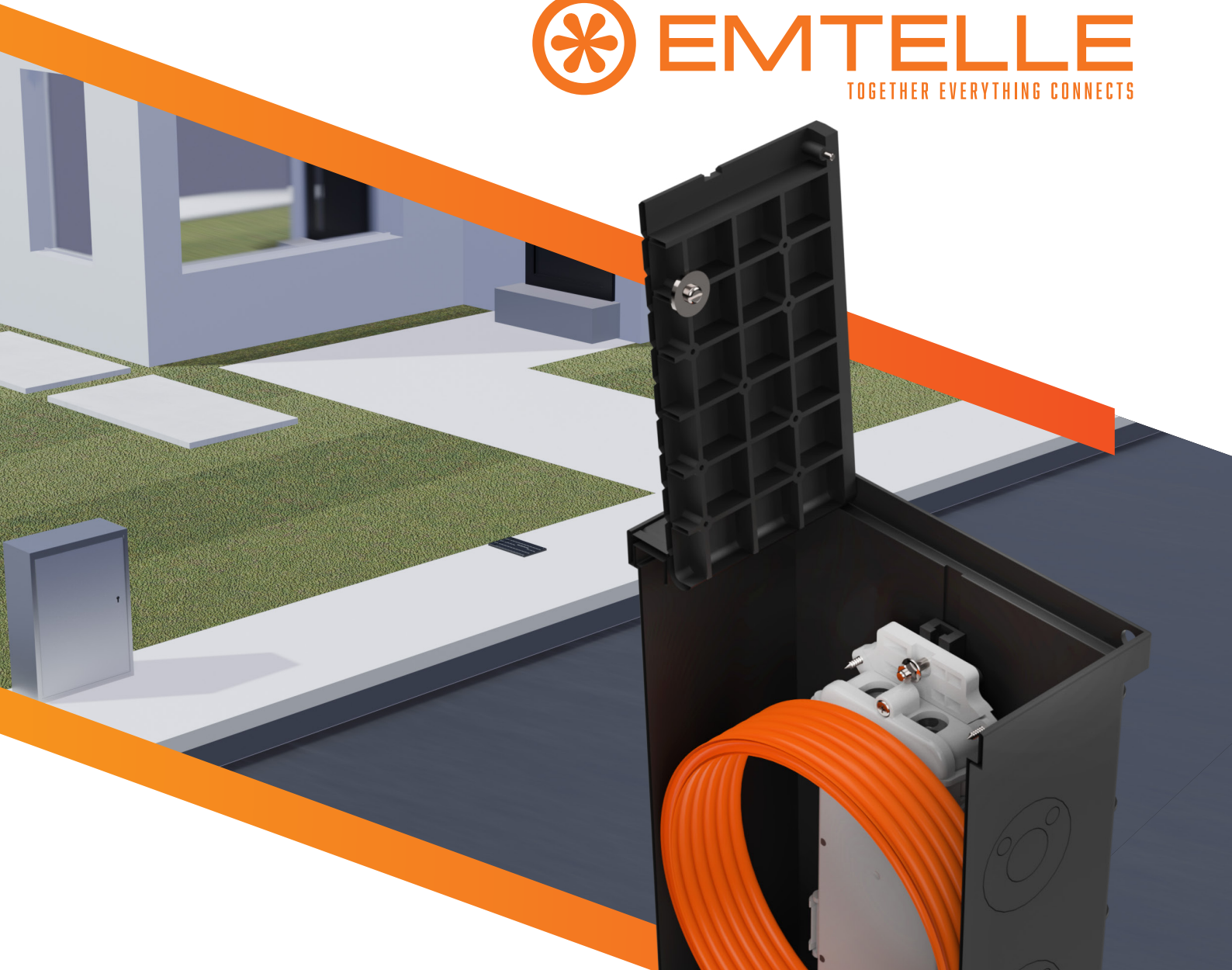




EMTELLE

TOGETHER EVERYTHING CONNECTS



TOBY BOX+

Practical Innovation for Your Network

Emtelle introduces the new Toby Box+ - engineered for optimal microduct management and splicing locations, as well as secure cable storage with customizable branding options.

Designed for easy access and durability, it ensures efficient, reliable, and sustainable FTTx installations. Ideally used as a demarcation point for microduct stubs and cable coils, helpful in converting 'Homes Passed' to 'Homes Connected'.

Upgrade your FTTx installations Today!
Together, Everything Connects



YOUR IDEAL FTTx DEMARCATION POINT

Emtelle's Toby Box+ serves as a versatile solution for housing both Microducts and Splice enclosures. Its hinged lid design ensures unparalleled accessibility, allowing technicians to make necessary connections at any given time. Positioned at the boundary to the customer, this box acts as a demarcation point, which adds ease when converting 'Homes Passed' to 'Homes Connected.' Combining convenience, efficiency, and sustainability to help you connect homes with ease.

KEY BENEFITS



ENVIRONMENTALLY FRIENDLY DESIGN

Made from up to 100% recycled materials and recyclable packaging, supporting your sustainability goals.



ROBUST CONSTRUCTION

Load-bearing capacity complies with BS5834-2 Grade C surface boxes - designed to withstand a load of 5kN (approx. 1100lbs) without deformation.



SPACE-SAVING DESIGN

Ideal for narrow trenching, the small footprint design not only reduces installation costs but also optimizes the available space.



DURABLE IN ALL CONDITIONS

Equipped with drainage holes and UV protected to guarantee long-lasting and durability even in challenging environments.

KEY FEATURES

Flexible Microduct Accommodation: Supports a range of sizes from 5mm to 54mm OD, ensuring easy integration.

Versatile Design: Available with accessory mount rails on one or both sides for up to two termination boxes.

Secure Connections: Comes with lockable lid and security screw option (ordered separately) to protect your equipment.

Wide Opening Lid: 165 x 113mm when fully open / 180 x 113mm with the lid removed. Customized branding/logo available on request.

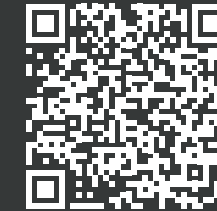
" Emtelle's Toby Box+ is a sustainable box built to last, designed to simplify your installations and ensure reliable connections. "

SPECIFICATIONS

Overall dimensions (LxWxD):
215 x 130 x 300mm

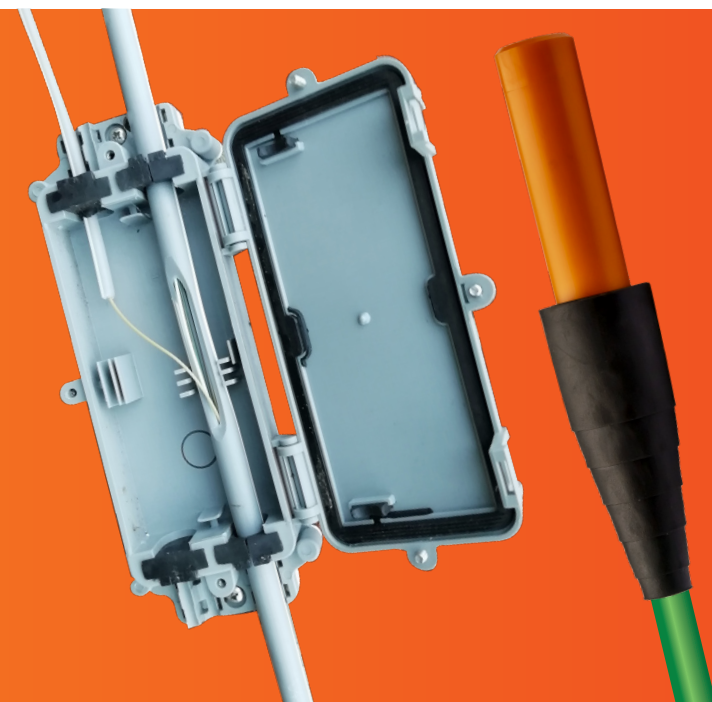
Knock-Out Ports on each side
54mm x 3, 25mm x 3, 8mm x 6

Full specification on Datasheet: UK_DS_77329



RELATED PRODUCTS

Why not add the following products to your Toby Box+ network: the **EM-Marker** for easy network location, should you choose to bury the Toby Box+. Our reliable **Microducts** for optimal protection of all your fiber optic cabling, and the **Emu Box** for secure storage or splicing of the FTTx drop cable of pre-fibered solutions.



YOUR FULL SOLUTION PROVIDER

Our solutions are made to perfectly complement your network installations, working together seamlessly for optimal performance.

uPVC Duct

Sub-Duct

Microduct

Tube Bundles

Fiber Optic Cables

Pre-Fibered

Pre-Connectorized

Reducers

Stripping Tools

Blowing Machines

Connectors

Closures

Contact us to learn more about our reliable and eco-friendly solutions!
Details are on the back page.



CONTACT US

Emtelle Group

Allan House, Floor 4
25 Bothwell Street
Glasgow, G2 6NL
United Kingdom

 **+44 (0) 1450 364 000**
 **info@emtelle.com**

Emtelle Hawick, UK

Haughhead
Hawick
TD9 8LF
United Kingdom

 **+44 (0) 1450 364 000**
 **info@emtelle.com**

Emtelle Jedburgh, UK

Oxnam Rd
Jedburgh
TD8 6NN
United Kingdom

 **+44 (0) 1450 364 000**
 **info@emtelle.com**

Emtelle Ridgmount Technologies Ltd

Unit 5, Field Farm
Business Centre,
Launton, OX26 5EL
United Kingdom

 **+44 (0) 1869 277 233**
 **info@ridgmount.com**

Emtelle Scandinavia

Vardevej 140
7280 Sønder Felding
Denmark

 **+45 86 28 84 88**
 **salg@emtelle.com**

Emtelle GmbH

An der Flurscheide 20
99098 Erfurt
Germany

 **+49 (0) 361 654 330**
 **info-de@emtelle.com**

Emtelle UAE

Plot 597-896
Dubai Investment Park
Dubai
UAE

 **+971 4 883 1608**
 **info@emtelle.com**

Emtelle USA

101 Mills Gap Rd
Unit A, Fletcher
NC 28732
USA

 **+1 (828) 7079970**
 **info@emtelle.com**

