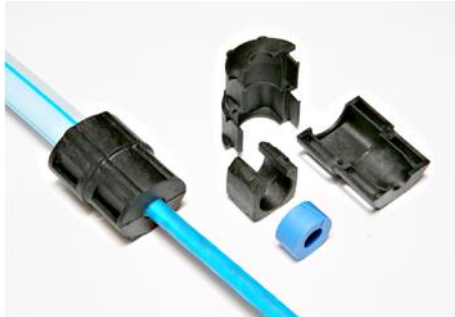


UK_DS_71161

FibreFlowTM Divisible Duct Seal Plugs



Product Description

Divisible mini-duct sealing plug sets developed to provide an effective and simple solution for gas and watertight duct sealing requirements. The modular system enables installation in new and existing situations.

Design Features

- ⊗ Gas and Watertight up to 0.5 Bar
- ⊗ Suitable for retrofitting
- ⊗ Easy Installation
- ⊗ Slim Design

Technical Specifications

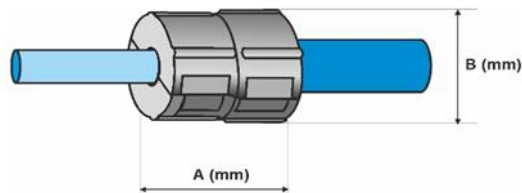
Plastic Shells:	Glass-fibre reinforced polyamide
Cutting Blocks:	Glass-fibre reinforced polyamide
Sealing Plugs:	TPE
Sealing Pressure:	up to 0.5 Bar
Pull-out force duct:	≥ 100N
Mechanical compression strength:	≥ 1000N, 10 sec



This document is intended as a guide only. Whilst the information it contains is believed to be correct, Emtelle can take no responsibility for actions taken based on the information contained in this document. Emtelle reserves the right to make changes to this document without notice. Purchase of Emtelle products does not convey any licence under patents or other intellectual property rights owned by third parties. All sales of product are subject to Emtelle's terms and conditions of sale only, which can be found on Emtelle's website. This document is protected by copyright (c) Emtelle Group [2021]. The products depicted are protected by intellectual property rights. Any unauthorized copying of this document or of our products is prohibited and Emtelle UK Limited will take action to prevent any infringement of its rights and to claim damages for the loss that it suffers.

www.emtelle.com

UK DS_71161



Emtelle Product Code	Description	Duct-Size (OD)	Cable Diameter	Size A (mm)	Size B (mm)	Supply qty. (per box)
73080	MINI DUCT CABLE SEAL 10 (2.5-1.5mm)	10	1.5 - 2.5	32	25	25
71161	MINI DUCT CABLE SEAL 10 (3.5-2.5mm)		2.5 - 3.5			
71162	MINI DUCT CABLE SEAL 10 (5.0-3.5mm)		3.5 - 5.0			
71163	MINI DUCT CABLE SEAL 10 (6.5-5.0mm)		5.0 - 6.5			
71164	MINI DUCT CABLE SEAL 10 (7.5-6.5mm)		6.5 - 7.5			
73561	MINI DUCT CABLE SEAL 12 (2.5-1.5mm)	12	1.5 - 2.5	32	25	25
71165	MINI DUCT CABLE SEAL 12 (3.5-2.5mm)		2.5 - 3.5			
71166	MINI DUCT CABLE SEAL 12 (5.0-3.5mm)		3.5 - 5.0			
71167	MINI DUCT CABLE SEAL 12 (6.5-5.0mm)		5.0 - 6.5			
71168	MINI DUCT CABLE SEAL 12 (8.0-6.5mm)		6.5 - 8.0			
73339	MINI DUCT CABLE SEAL 12 (8.5-7.0mm)		7.0 - 8.5			
18700	MINI DUCT CABLE SEAL 14 (2.5-1.5mm)	14	1.5 - 2.5	34	29	25
18701	MINI DUCT CABLE SEAL 14 (3.5-2.5mm)		2.5 - 3.5			
18702	MINI DUCT CABLE SEAL 14 (5.0-3.5mm)		3.5 - 5.0			
71833	MINI DUCT CABLE SEAL 14 (6.5-5.0mm)		5.0 - 6.5			
71169	MINI DUCT CABLE SEAL 14 (8.0-6.5mm)		6.5 - 8.0			
71170	MINI DUCT CABLE SEAL 14 (10.0-8.0mm)		8.0 - 10.0			
18697	MINI DUCT CABLE SEAL 16 (2.5-1.5mm)	16	1.5 - 2.5	34	29	25
18698	MINI DUCT CABLE SEAL 16 (3.5-2.5mm)		2.5 - 3.5			
72007	MINI DUCT CABLE SEAL 16 (5.0-3.5mm)		3.5 - 5.0			
71978	MINI DUCT CABLE SEAL 16 (6.5-5.0mm)		5.0 - 6.5			
71171	MINI DUCT CABLE SEAL 16 (8.0-6.5mm)		6.5 - 8.0			
71172	MINI DUCT CABLE SEAL 16 (10.0-8.0mm)		8.0 - 10.0			
18703	MINI DUCT CABLE SEAL 18 (5.0-3.5mm)	18	3.5 - 5.0	36	34	25
18704	MINI DUCT CABLE SEAL 18 (6.5-5.0mm)		5.0 - 6.5			
18705	MINI DUCT CABLE SEAL 18 (8.0-6.5mm)		6.5 - 8.0			
72789	MINI DUCT CABLE SEAL 18 (9.5-8.0mm)		8.0 - 9.5			
71173	MINI DUCT CABLE SEAL 18 (12.0-9.4mm)		9.4 - 12.0			
73567	MINI DUCT CABLE SEAL 20 (5.0-3.5mm)	20	3.5 - 5.0	36	34	25
73343	MINI DUCT CABLE SEAL 20 (6.5-5.0mm)		5.0 - 6.5			
73344	MINI DUCT CABLE SEAL 20 (8.0-6.5mm)		6.5 - 8.0			
72145	MINI DUCT CABLE SEAL 20 (9.5-8.0mm)		8.0 - 9.5			
71174	MINI DUCT CABLE SEAL 20 (12.0-9.4mm)		9.4 - 12.0			

This document is intended as a guide only. Whilst the information it contains is believed to be correct, Emtelle can take no responsibility for actions taken based on the information contained in this document. Emtelle reserves the right to make changes to this document without notice. Purchase of Emtelle products does not convey any licence under patents or other intellectual property rights owned by third parties. All sales of product are subject to Emtelle's terms and conditions of sale only, which can be found on Emtelle's website. This document is protected by copyright (c) Emtelle Group [2021]. The products depicted are protected by intellectual property rights. Any unauthorized copying of this document or of our products is prohibited and Emtelle UK Limited will take action to prevent any infringement of its rights and to claim damages for the loss that it suffers.

www.emtelle.com

UK DS_71161

75725	MINI DUCT CABLE SEAL 25 (3.7-4.7mm)	25	3.7 – 4.7	40	37	25
75726	MINI DUCT CABLE SEAL 25 (4.7-6.5mm)		4.7 – 6.5			
75727	MINI DUCT CABLE SEAL 25 (6.5-8.5mm)		6.5 – 8.5			
75728	MINI DUCT CABLE SEAL 25 (8.5-10mm)		8.5 – 10.0			
75873	MINI DUCT CABLE SEAL 25 (10-12mm)		10.0 – 12.0			
76039	MINI DUCT CABLE SEAL 25 (12-14mm)		12.0 – 14.0			

Packaging and Labelling

All products suitably packaged in recyclable materials and clearly labelled with Emtelle Product Code and Description where possible.

Supplied 2 half shells and a split rubber seal



Example of product, sizes 10-20mm



Example of product, size 25mm

END OF SPECIFICATION

This document is intended as a guide only. Whilst the information it contains is believed to be correct, Emtelle can take no responsibility for actions taken based on the information contained in this document. Emtelle reserves the right to make changes to this document without notice. Purchase of Emtelle products does not convey any licence under patents or other intellectual property rights owned by third parties. All sales of product are subject to Emtelle's terms and conditions of sale only, which can be found on Emtelle's website. This document is protected by copyright (c) Emtelle Group [2021]. The products depicted are protected by intellectual property rights. Any unauthorized copying of this document or of our products is prohibited and Emtelle UK Limited will take action to prevent any infringement of its rights and to claim damages for the loss that it suffers.

www.emtelle.com