

 FibreFlow™
EM-WRAP Single Layer 400mm

Product Description

EM-WRAP features a unique gel-free design that enable the closure to be re-usable & re-enterable all while providing excellent mechanical protection against external elements.

Design Features

- ⊗ Compact Design $\varnothing 70\text{mm}$ (Install onto a 12 way Direct Install 5/3.5mm connected with 12 connectors)
- ⊗ UV stabilized outer body
- ⊗ Operational between -25°C - $+60^{\circ}\text{C}$
- ⊗ Flexible to fits over various products shape.
- ⊗ Stretchable rubber jacket
- ⊗ All Dielectric design with no metal parts
- ⊗ Low profile closure <math>< 16\text{mm}</math>
- ⊗ Fast and easy installation
- ⊗ Re-openable – supplied with cable ties
- ⊗ Re-useable – recovered closure can be rinsed clean and reused.
- ⊗ Supplied in 400m lengths (Cut to size in 100mm increments if shorter length required)
- ⊗ Provides protection for thin wall microducts, duct bundles and connector when exposed.
- ⊗ Suitable for installation with a variety of Emtelle FibreFlow microduct products.



Application Notes

EM-WRAP is design to be used as a flexible wrap around tube management closure.

The EM-WRAP can be used to protect exposed microducts from sand, and loose impediments. It also offers UV protection for microducts exposed to the sun or crush resistance for exposed thin wall microduct underground. EM-WRAP protects individual or bundle microducts, connectors and accessories.

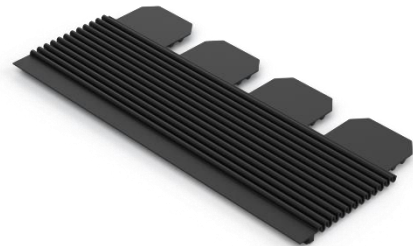
UK_DS_75128

This makes the EM-WRAP ideal for use with Emtelle's FibreFlow tube bundle whether they are deployed in buried, ducted or overhead networks. This flexible closure can be used to replace a variety of hard plastic closures since the EM-WRAP can easily be fitted round various bundle shapes – Not just round bundles.

Applications range from bundle repairs and straight bundle joints to breakout joints for managing and protecting drop tube in a FTTx fibre optical network. This closure is ideal for PIA / DPA installations.

Specifications

Material type:	TPE moulded body.
Colour	Black UV Body.
Operating Temperature	-25°C to 60°C
Nominal Size	400mm x 200mm x 16mm
Bundle Diameter	20mm up to 40mm (With multiple ducts and connectors)



Packaging and Labelling

All products suitably packaged in recyclable materials and clearly labelled with Emtelle Product Code and Description where possible.

Product Code 75128 includes:

- ⊗ 1 x 400mm Single layer EM-WRAP.
- ⊗ 4 x Cable ties

Installation Notes

The EM-WRAP is quick and easy to install and comes with all accessories required to create a watertight protective closure.

To get the best possible sealing and protection follow Emtelle's installation guidelines document or click / scan the QR code below for the video guide:



END OF SPECIFICATION