

UK_DS_Customer_Fibre_Optic_Wall_Outlet

Customer Fibre Optic Wall Outlet



Product Description

The wall mounted fibre optic outlet enables a fibre optic cable termination point to be presented within the end user home. The wall outlet can accommodate two fibre adaptors, either SC simplex or LC Duplex. Flange or flangeless adaptors can be housed, either recessed or protruding from the faceplate as required. Press fit strain relief features secure the incoming cable whilst cable tie anchor points are provided for additional strain relief. Fibre cables can enter through the base of the unit or through the rear.

Fibre management features ensure a minimum bend radius of 25mm is maintained as the bare fibre is routed through the outlet. Screw holes allow for easy installation and positioning. Alternatively, the recessed base means the unit can be fastened with adhesive or even hot glue, maintaining the outlet flush to the wall.

The wall outlet is made from ABS plastic with a quality design and surface finish. If required can be produced with special plastic components in order to have LSZH and Fire-Retardant features.

The wall outlet is made from ABS plastic with a quality design and surface finish. If required can be produced with special plastic components in order to have LSZH and Fire-Retardant features.

The unit can be supplied with adaptors and pigtails if required or even pre-terminated.

Design Features

- ⊕ Maximum capacity 2x SC simplex connectors or 2x LC duplex connectors
- ⊕ Installed directly on the wall or onto a flush-mount back box
- ⊕ Cable entry at the base of the unit or through the rear
- ⊕ Recessed base use with adhesive or hot glue
- ⊕ Can accommodate up to 4 fusion splice protectors (up to 45mm 2x double stack)
- ⊕ Quality surface finish
- ⊕ Tamper-proof latches
- ⊕ Customer logo injected at the cover
- ⊕ Customized full cover with customer design
- ⊕ 50 units packing in a single carton box
- ⊕ Engineered & Produced in EU (Portugal)

This document is intended as a guide only. Whilst the information it contains is believed to be correct, Emtelle can take no responsibility for actions taken based on the information contained in this document. Emtelle reserves the right to make changes to this document without notice. Purchase of Emtelle products does not convey any licence under patents or other intellectual property rights owned by third parties. All sales of product are subject to Emtelle's terms and conditions of sale only, which can be found on Emtelle's website. This document is protected by copyright (c) Emtelle Group [2023]. The products depicted are protected by intellectual property rights. Any unauthorized copying of this document or of our products is prohibited and Emtelle UK Limited will take action to prevent any infringement of its rights and to claim damages for the loss that it suffers. www.emtelle.com

UK_DS_Customer_Fibre_Optic_Wall_Outlet

Standard Kit Accessories for 1, 2 or 4FO

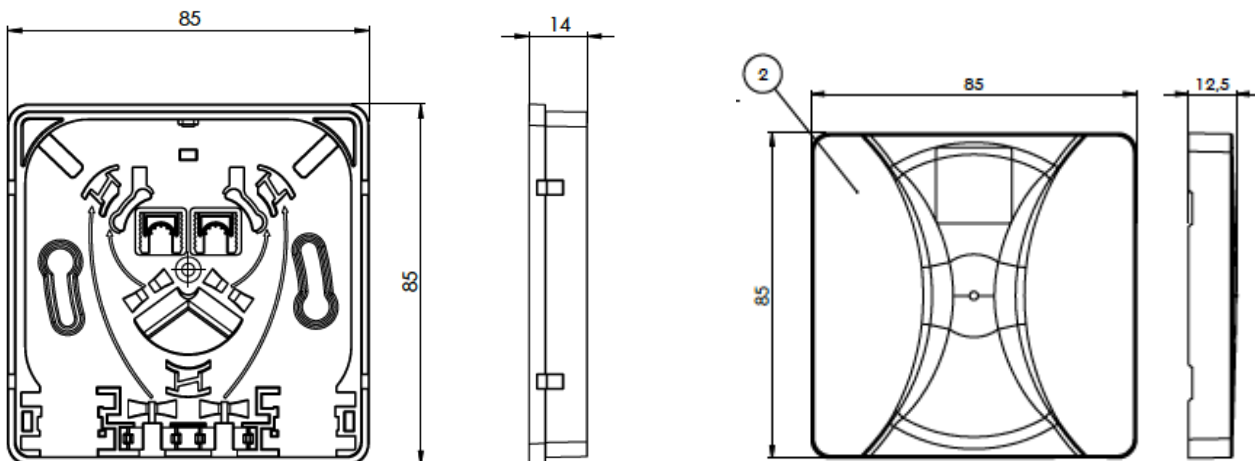
- ⊗ 2x Screws
- ⊗ 2x Bushings
- ⊗ 1, 2 or 4x Splice Sleeves 45mm
- ⊗ 2x Cable ties
- ⊗ 1x Laser Sticker

Options

- ⊗ With front dust covers
- ⊗ Cable entry
- ⊗ Adapter
- ⊗ Drop cable Overlength Rear box

Specifications

Dimensions (mm)	Height	Width	Depth
		85	85
with Drop cable Overlength Rear box	85	85	46
Number and type of adaptors	2x SC simplex 2x LC duplex		
Maximum number of splices	4 (up to 45mm)		
Weight (kg)	0,045		
Housing material	ABS ABS LSZH FR (required by customer)		
Colour	Ral 9003 White		
Mechanical IK protection	IK07		
Water&Dust IP protection	IP43		

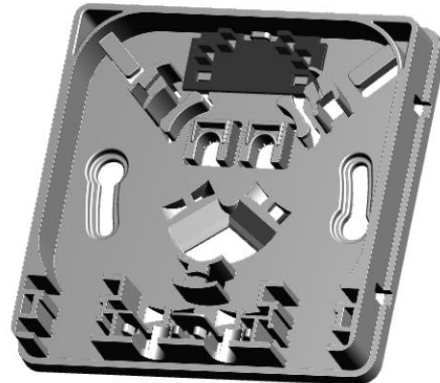


This document is intended as a guide only. Whilst the information it contains is believed to be correct, Emtelle can take no responsibility for actions taken based on the information contained in this document. Emtelle reserves the right to make changes to this document without notice. Purchase of Emtelle products does not convey any licence under patents or other intellectual property rights owned by third parties. All sales of product are subject to Emtelle's terms and conditions of sale only, which can be found on Emtelle's website. This document is protected by copyright (c) Emtelle Group [2023]. The products depicted are protected by intellectual property rights. Any unauthorized copying of this document or of our products is prohibited and Emtelle UK Limited will take action to prevent any infringement of its rights and to claim damages for the loss that it suffers. www.emtelle.com

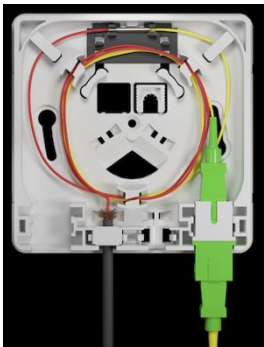
UK_DS_Customer_Fibre_Optic_Wall_Outlet



External view with dust covers (optional)

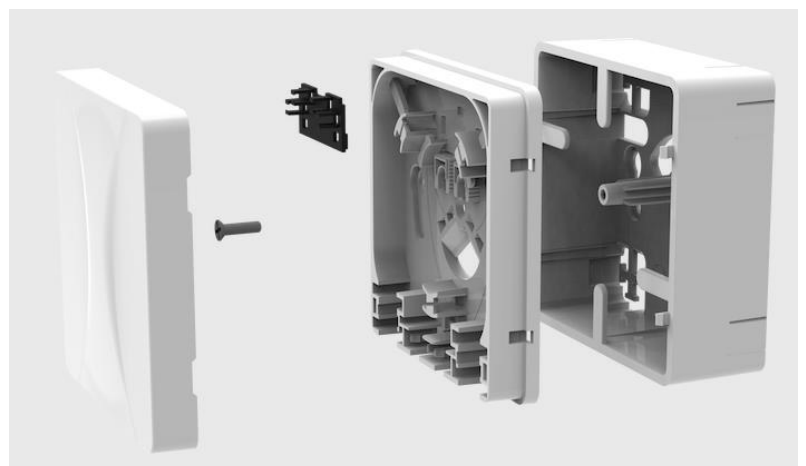


Internal view without dust covers



Drop cable Overlength Rear Box (optional accessory)

- ⊗ Cable storage
- ⊗ 1,75mt 5mm cable
- ⊗ 2,50mt 3mm cable
- ⊗ Up to 20mts 0,9mm cable
- ⊗ 2 entry point in every direction
- ⊗ Bending radius protection
- ⊗ Reduced size 85x85x46mm
- ⊗ 30 units packing in a single carton box



This document is intended as a guide only. Whilst the information it contains is believed to be correct, Emtelle can take no responsibility for actions taken based on the information contained in this document. Emtelle reserves the right to make changes to this document without notice. Purchase of Emtelle products does not convey any licence under patents or other intellectual property rights owned by third parties. All sales of product are subject to Emtelle's terms and conditions of sale only, which can be found on Emtelle's website. This document is protected by copyright (c) Emtelle Group [2023]. The products depicted are protected by intellectual property rights. Any unauthorized copying of this document or of our products is prohibited and Emtelle UK Limited will take action to prevent any infringement of its rights and to claim damages for the loss that it suffers. www.emtelle.com

UK_DS_Customer_Fibre_Optic_Wall_Outlet

Packaging and Labelling

All products suitably packaged in recyclable materials and clearly labelled with Emtelle Product Code and Description where possible.

END OF SPECIFICATION

This document is intended as a guide only. Whilst the information it contains is believed to be correct, Emtelle can take no responsibility for actions taken based on the information contained in this document. Emtelle reserves the right to make changes to this document without notice. Purchase of Emtelle products does not convey any licence under patents or other intellectual property rights owned by third parties. All sales of product are subject to Emtelle's terms and conditions of sale only, which can be found on Emtelle's website. This document is protected by copyright (c) Emtelle Group [2023]. The products depicted are protected by intellectual property rights. Any unauthorized copying of this document or of our products is prohibited and Emtelle UK Limited will take action to prevent any infringement of its rights and to claim damages for the loss that it suffers. www.emtelle.com