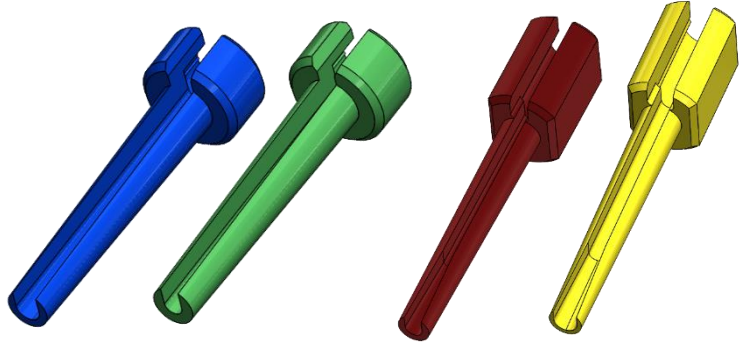
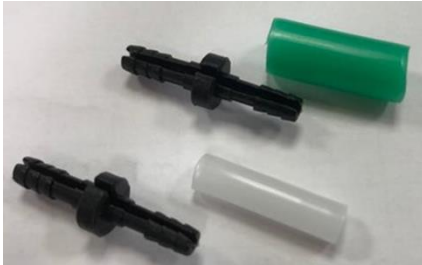




Emtelle's Fibre Restraint Mk1, Mk2 and Mk3 ELF



Description

The ELF is a fibre restraint which will secure Emtelle's fibre unit when it leaves the microduct to enter a closure or cabinet. The ELF has an open channel running the length of the product which secures the fibre unit when activated inside a microduct.

The ELF's have been designed for use with the following Emtelle products:

- Emtelle 2 Fibre Unit
- Emtelle 4 Fibre Unit
- Emtelle 12 Fibre Unit
- Emtelle QWKlink products with 2mm LFBT
- Emtelle 24 Fibre Unit

Application

The ELF can be deployed at splice locations which are subject to thermal expansion/contraction or vibration of the microduct. The product has an open channel to allow for easy fitting and retrofitting on site. The Mk1 ELF comes with an activation collar depending on the microduct size the ELF is being activated into. The head of the Mk2 and Mk3 ELF has a cut-out to allow a 3mm transport tube to be fitted over the fibre if further protection is required.

Tap/Scan the QR code
for installation video



This document is intended as a guide only. Whilst the information it contains is believed to be correct, Emtelle can take no responsibility for actions taken based on the information contained in this document. Emtelle reserves the right to make changes to this document without notice. All sales of product are subject to Emtelle's terms and conditions of sale only, which can be found on Emtelle's website.

This document is protected by copyright (c) Emtelle Group [2020]. The products depicted are protected by intellectual property rights. Any unauthorized copying of this document or of our products is prohibited and Emtelle UK Limited will take action to prevent any infringement of its rights and to claim damages for the loss that it suffers.

www.emtelle.com

UK DS ELF

Issue D: 18/01/2021

Page 2 of 5

Mk1 Technical Data

Approval Report	TR647
Material	PA6
Colour	Black
Acceptable Microduct Size	3.5mm to 4mm Bore Microduct
Long Term Restraint force	2/4 fibre unit – 1N
	

Mk2 Technical Data

Emtelle Drawing	UK_DWG_0025E
Approval Report	TR749
Material	7.5% G.F. Nylon 6
Acceptable Microduct Size	3.5mm to 4mm Bore Microduct
Long Term Restraint force	12fibre unit – 15N QWKlink with 2mm LFBT – 8N 24 Fibre Unit – 17N
Blue ELF	Green ELF
Suitable for 24 Fibre Unit	Suitable for 12fibre unit or QWKlink with 2mm LFBT
	

This document is intended as a guide only. Whilst the information it contains is believed to be correct, Emtelle can take no responsibility for actions taken based on the information contained in this document. Emtelle reserves the right to make changes to this document without notice. All sales of product are subject to Emtelle's terms and conditions of sale only, which can be found on Emtelle's website.

This document is protected by copyright (c) Emtelle Group [2020]. The products depicted are protected by intellectual property rights. Any unauthorized copying of this document or of our products is prohibited and Emtelle UK Limited will take action to prevent any infringement of its rights and to claim damages for the loss that it suffers.

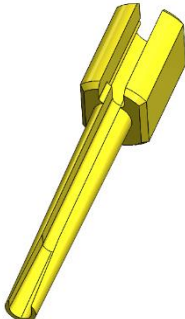
www.emtelle.com

UK DS ELF

Issue D: 18/01/2021

Page 3 of 5

Mk3 Technical Data

Emtelle Drawing	20-0064-SOL-A and 20-0064-1-SOL-A
Approval Report	TR776
Material	7.5% G.F. Nylon 6
Acceptable Microduct Size	3.2mm Bore Microduct
Long Term Restraint force	2/4 fibre unit - 10N 12fibre unit - 15N QWKlink with 2mm LFBT – 8N
Red ELF	Yellow ELF
Suitable for 2/4 Fibre Unit	Suitable for 12fibre unit or QWKlink with 2mm LFBT
	

Product Codes

The following product codes are available for the Mk1, Mk2 and Mk3 ELF:

Version	Microduct IDSize	Product Being Restrained	ELF product Code	ELF Colour
Mk1	3.5mm	Emtelle 2 Fibre Unit (with 4mm Collar)	73433	Black
Mk1	4mm	Emtelle 2 Fibre Unit (with 3.5mm Collar)	73001	Black
Mk1	3.5mm	Emtelle 4 Fibre Unit (with 4mm Collar)	73433	Black
Mk1	4mm	Emtelle 4 Fibre Unit (with 3.5mm Collar)	73001	Black
Mk1	3.5mm or 4mm	Emtelle 2/4 Fibre Unit (No Collar)	72964	Black
Mk2	3.5mm to 4mm	Emtelle 12 Fibre Unit	74675	Green
Mk2	3.5mm to 4mm	Emtelle QWKlink with 2mm LFBT	74675	Green
Mk2	3.5mm to 4mm	Emtelle 24 Fibre Unit	74674	Blue
Mk3	3.2mm	Emtelle 12 Fibre Unit	TBC	Yellow
Mk3	3.2mm	Emtelle QWKlink with 2mm LFBT	TBC	Yellow
Mk3	3.2mm	Emtelle 2/4 Fibre Unit	TBC	Red

This document is intended as a guide only. Whilst the information it contains is believed to be correct, Emtelle can take no responsibility for actions taken based on the information contained in this document. Emtelle reserves the right to make changes to this document without notice. All sales of product are subject to Emtelle's terms and conditions of sale only, which can be found on Emtelle's website.

This document is protected by copyright (c) Emtelle Group [2020]. The products depicted are protected by intellectual property rights. Any unauthorized copying of this document or of our products is prohibited and Emtelle UK Limited will take action to prevent any infringement of its rights and to claim damages for the loss that it suffers.

www.emtelle.com

Installation

Installation instructions for Mk2 and Mk3 ELF are as follows:



Locate the microduct and identify the fibre unit that needs restrained, select the correct ELF.



Gently pull outwards approx. 20mm of free moving fibre unit.



Line up the ELF central channel with the fibre unit.



Starting with the front of the ELF (closest to microduct) gently push the fibre into the central channel until the fibre is secure.



Using the top of the ELF push it into the microduct to activate.



The ELF is now activated, and fibre secured.

This document is intended as a guide only. Whilst the information it contains is believed to be correct, Emtelle can take no responsibility for actions taken based on the information contained in this document. Emtelle reserves the right to make changes to this document without notice. All sales of product are subject to Emtelle's terms and conditions of sale only, which can be found on Emtelle's website.

This document is protected by copyright (c) Emtelle Group [2020]. The products depicted are protected by intellectual property rights. Any unauthorized copying of this document or of our products is prohibited and Emtelle UK Limited will take action to prevent any infringement of its rights and to claim damages for the loss that it suffers.

www.emtelle.com

UK DS ELF

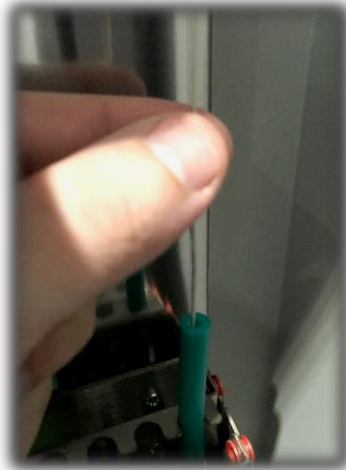
Issue D: 18/01/2021

Page 5 of 5

Installation instructions for the Mk1 ELF are as follows:



Locate the microduct and identify the fibre unit that needs restrained, select the correct ELF.



Gently pull outwards approx. 20mm of free moving fibre unit.



Line up the ELF central channel with the fibre unit and push the fibre into the slot.



Slide over the activation collar supplied with the ELF.



Using the top of the ELF push it into the microduct to activate.



Push the activation collar down to secure the ELF. The ELF is now activated, and fibre secured.

Packaging and Labelling

All products suitably packaged and clearly labelled with Emtelle Product Code and description where possible.

This document is intended as a guide only. Whilst the information it contains is believed to be correct, Emtelle can take no responsibility for actions taken based on the information contained in this document. Emtelle reserves the right to make changes to this document without notice. All sales of product are subject to Emtelle's terms and conditions of sale only, which can be found on Emtelle's website.

This document is protected by copyright (c) Emtelle Group [2020]. The products depicted are protected by intellectual property rights. Any unauthorized copying of this document or of our products is prohibited and Emtelle UK Limited will take action to prevent any infringement of its rights and to claim damages for the loss that it suffers.

www.emtelle.com