

UK_DS_FTTH_Cabinets



Product Description

FTTH Drop Cabinets are designed for outdoor applications (IP54) and needs to be placed on an in-ground root or concrete pre-fabricated base. Cabinet has a robust construction, coupled with a variety of vandal resistant features. Cabinets are supplied fully assembled ready for immediate deployment.

Two cabinet sizes cover a range of drops from 48f to 144f drops. The cabinet is highly configurable with splice trays, LGX splitter modules, and options for both microduct and cable installations. Both cabinet sizes are compact and features a single door. The fibre routing is simple and logical, offers high usable density, and is designed around regular accessibility.

Cabinet Details

The cabinets are manufacture from stainless steel and are fully welded. It can be supplied in 314.5mm and 250mm depth.

Customer connections	High (mm)	Width (mm)	Depth (mm)
48f up to 72f	981.4	535	314.5
48f up to 72f	981.4	535	250.0
96f up to 144f	981.4	780	314.5
96f up to 144f	981.4	780	250.0

*height is measured from the top of the roof apex (90mm roof height)

- Material: 1.4003 grade stainless steel,
- Finished: Polyester powder coated or upgrade to anti-graffiti finish
- Single door with removable LH lift-off type hinges and 2-point locking from barrel type lock
- Roof overhangs door front face by 15mm
- Ventilation louvres in cabinet door
- Designed to meet IP54 with optional filter media fitted behind louvres.
- Backboard sets into a "U" channel at the bottom of cabinet and secured with two swing latches at top.
- 3 hank bushes on each internal side for fixing of fibre basket(s)
- All parts fully earth bonded with 4mm² earth cables.



This document is intended as a guide only. Whilst the information it contains is believed to be correct, Emtelle can take no responsibility for actions taken based on the information contained in this document. Emtelle reserves the right to make changes to this document without notice. All sales of product are subject to Emtelle's terms and conditions of sale only, which can be found on Emtelle's website. This document is protected by copyright (c) Emtelle Group [2020]. The products depicted are protected by intellectual property rights. Any unauthorized copying of this document or of our products is prohibited and Emtelle UK Limited will take action to prevent any infringement of its rights and to claim damages for the loss that it suffers.

www.emtelle.com

UK_DS_FTTH_Cabinets

- Optional inground root with open front 280mm high
- Optional door and roof can be fitted with polystyrene insulation.

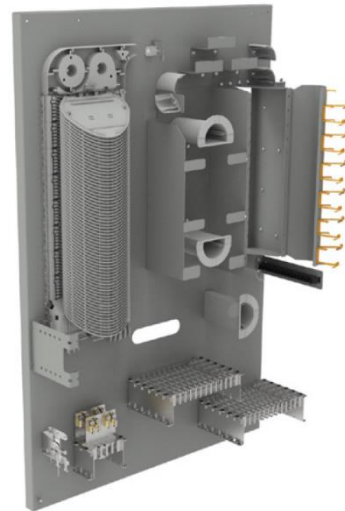
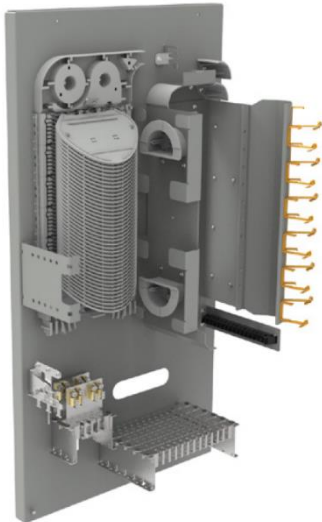


Internal Frame Details

The cabinet is highly configurable and is available 2 frame sizes to allow for up to 144 customer connection. Intuitive fibre routing and management based on the Commscope FIST system. Future customer connections can be neatly parked speeding up activations.

Splitter Modules can be added as new customer sign-up. Easy to install OCM1 LGX style splitter module are available in a variety of configurations.

Cable and micro duct retention bracket are sold separately as well allowing for modularity and future upgrades.



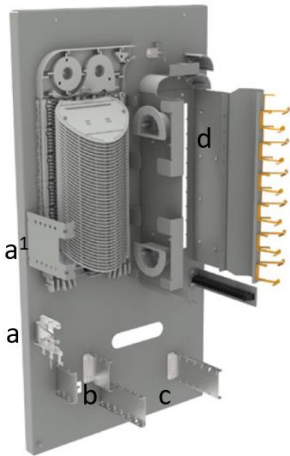
Narrow up to 72 Connection (535mm)	Wide up to 144 Connection (780mm)
48 up to 72 Point-to-multipoint positions	96 up to 144 Point-to-multipoint positions
8 branch-off blown fiber Ø5,7 & 8mm micro tube positions	8 branch-off blown fiber Ø5,7 & 8mm micro tube positions
4 branch-off blown fiber Ø 12mm micro tube positions	4 branch-off blown fiber Ø 12mm micro tube positions
72 direct drop blown fiber Ø5,7 & 8mm micro tube positions	144 direct drop blown fiber Ø5,7 & 8mm micro tube positions
10 OCM1 LGX Splitter Module positions (LC or SC designs)	12 OCM1 LGX Splitter Module positions (LC or SC designs)
Up to 480 splices (including SC trays 160splices)	Up to 768 splices (including SC trays 256 splices)
FIST single-circuit and single-element splice trays	
Storage area for looped cable	
Fast and simple installation	
Compatible with all fiber types: G.652D and G.657 series	

This document is intended as a guide only. Whilst the information it contains is believed to be correct, Emtelle can take no responsibility for actions taken based on the information contained in this document. Emtelle reserves the right to make changes to this document without notice. All sales of product are subject to Emtelle's terms and conditions of sale only, which can be found on Emtelle's website. This document is protected by copyright (c) Emtelle Group [2020]. The products depicted are protected by intellectual property rights. Any unauthorized copying of this document or of our products is prohibited and Emtelle UK Limited will take action to prevent any infringement of its rights and to claim damages for the loss that it suffers.

www.emtelle.com

UK_DS_FTTH_Cabinets

Layout



The Cabinet is supplied with a main feeder cable retention bracket (a) that can accommodate up to 3 x 23mm cables. This is ideal for loop through application and located right below the loop tube storage bracket(a¹). The cable can be secured additionally via the strength member or by fixing the aramid yarns to the anchoring point.

Branch-off cables can be accommodated in position (b) with easy snap-in retention brackets - 2 slots are available (b)

Drop cables can be accommodated in position (c) with easy snap-in retention brackets – 6 slots are available on the narrow frame and 12 slots for the wide frame.

LGX splitter bay (d) can accommodate 10 modules on the narrow frame or 12 modules on the wide frame.

Brackets & modules

Branch-off Bracket:

- 4 x 5mm Snap-in bracket with cable retention anchor
- 4 x 7mm Snap-in bracket with cable retention anchor
- 4 x 8mm Snap-in bracket with cable retention anchor
- 2 x 12mm Snap-in bracket with cable retention anchor



Drop Bracket:

- 12 x 5mm Snap-In bracket.
- 12 x 7mm Snap-In bracket.
- 12 x 8mm Snap-In bracket.



LGX Modules:

Various LGX modules are available and can be configured to accommodate large and small form optical connectors. LGX modules can be configured with PLC splitter modules in sizes ranging from 1x2 up to 1x16.



*Max LGX positions for narrow cabinet frame (48-72) is 10. Using **SC/APC** 1:4 splitters allow for a maximum of 40 drops.

Max LGX positions for wide cabinet frame (96-144) is 12. Using **SC/APC 1:4 splitters allow for a maximum of 48 drops.

***Max LGX positions for narrow cabinet frame (48-72) is 10. Using **LC/APC** 1:4 splitters allow for a maximum of 80 drops.

****Max LGX positions for wide cabinet frame (96-144) is 12. Using **LC/APC** 1:4 splitters allow for a maximum of 96 drops.

This document is intended as a guide only. Whilst the information it contains is believed to be correct, Emtelle can take no responsibility for actions taken based on the information contained in this document. Emtelle reserves the right to make changes to this document without notice. All sales of product are subject to Emtelle's terms and conditions of sale only, which can be found on Emtelle's website. This document is protected by copyright (c) Emtelle Group [2020]. The products depicted are protected by intellectual property rights. Any unauthorized copying of this document or of our products is prohibited and Emtelle UK Limited will take action to prevent any infringement of its rights and to claim damages for the loss that it suffers.

www.emtelle.com

UK_DS_FTTH_Cabinets

Ordering information

The cabinet come in two sizes and each size features 2 depts to allow for a more compact design.

Product code	Description	Additional Information	MOQ
	OCAB-P-S4-D315-KIT01-72F	Cabinet for up to 72f customer connections, including SC trays for 160 splices, no micro-duct retention plates included, depth 315mm	8 pieces
	OCAB-P-S4-D250- KIT01-72F	Cabinet for up to 72f customer connections, including SC trays for 160 splices, no micro-duct retention plates included, depth 250mm	8 pieces
	OCAB-P-S4-D315- KIT01-144F	Cabinet for up to 144f customer connections, including SC trays for 256 splices, no micro-duct retention plates included, depth 315mm	5 pieces
	OCAB-P-S4-D250- KIT01-144F	Cabinet for up to 144f customer connections, including SC trays for 256 splices, no micro-duct retention plates included, depth 250mm	5 pieces

- Setup a complete solution with your choice of brackets and LGX splitters and Emtelle will build a kit with your unique product code.

Locking Options

Secure cabinets with limited and controlled access can ensure the integrity and quality of a distribution network. General lock solutions are sometimes compromise due to the lack of unique key configurations available. As infrastructure evolves to become "smarter" so can the way in which we secure them as well. Enquire with Emtelle about their Smartlock Solutions.

Hollow Latch Lock and Keys:

- Buy a unique locking barrel and key for your infrastructure that is independent from the cabinet manufacturer or installer.



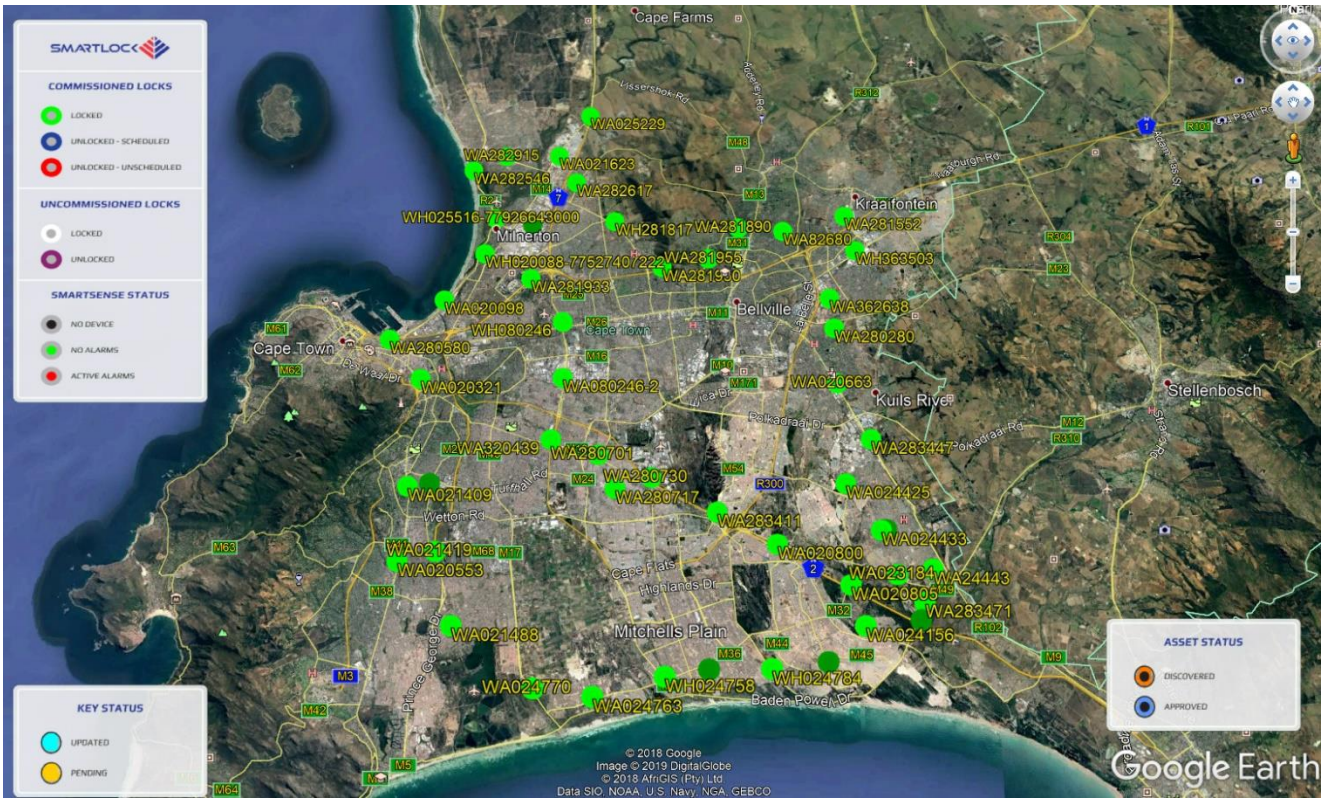
This document is intended as a guide only. Whilst the information it contains is believed to be correct, Emtelle can take no responsibility for actions taken based on the information contained in this document. Emtelle reserves the right to make changes to this document without notice. All sales of product are subject to Emtelle's terms and conditions of sale only, which can be found on Emtelle's website. This document is protected by copyright (c) Emtelle Group [2020]. The products depicted are protected by intellectual property rights. Any unauthorized copying of this document or of our products is prohibited and Emtelle UK Limited will take action to prevent any infringement of its rights and to claim damages for the loss that it suffers.

www.emtelle.com

UK_DS_FTTH_Cabinets

Smartlock lock with Access management:

- Full manage access from your own NOC into infrastructure.
- Full monitor access to validate infrastructure is securely lock.
- Integrate into existing infrastructure.



Enquire with Emtelle on bespoke integration or existing Smartlock solutions.



This document is intended as a guide only. Whilst the information it contains is believed to be correct, Emtelle can take no responsibility for actions taken based on the information contained in this document. Emtelle reserves the right to make changes to this document without notice. All sales of product are subject to Emtelle's terms and conditions of sale only, which can be found on Emtelle's website. This document is protected by copyright (c) Emtelle Group [2020]. The products depicted are protected by intellectual property rights. Any unauthorized copying of this document or of our products is prohibited and Emtelle UK Limited will take action to prevent any infringement of its rights and to claim damages for the loss that it suffers.

www.emtelle.com