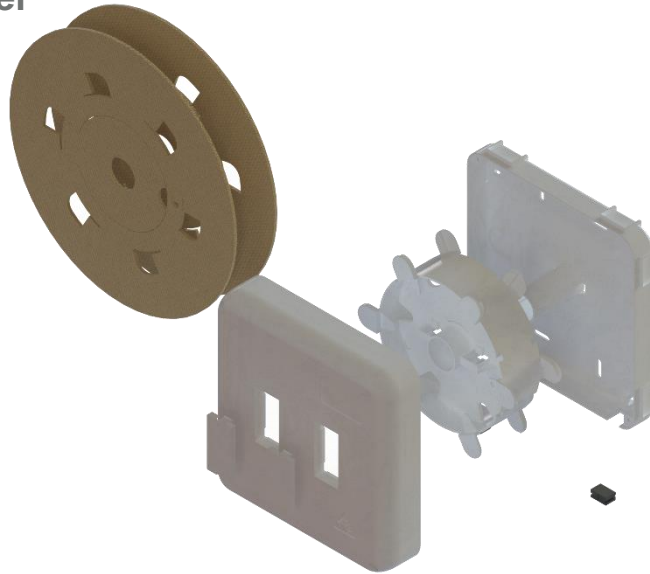


## UK\_DS\_Internall\_Termination\_Box

### FibreFlow<sup>TM</sup> ITB with storage reel



### Product Description

The Internal Terminations Box (ITB) creates a unique network access point to the FTTH optical fibre network. The ITB houses a built-in spindle on which a plastic moulded cable dispenser reel / drum can be mounted. This significantly increases the reliability and speed of storing excess cable slack when engineers perform customer connections.

The ITB housing can accommodate microduct (<8mm) or conventional cable trunking (24mm x 15mm) and displays neatly on internal walls. It has various cable / microduct knock / drill out holes for improved flexibility. Cables / microducts can also be routed through 2 openings (ports) at the bottom of the ITB housing through a rubber gland.

The plastic reel is ideal for dispensing terminated optical fibre cables (typical 1mm FibreFast microcable). These reels can be factory fitted with up to 1000m of terminated cable with disposable cardboard flanges. The plastic reel fits securely and neatly onto the ITB spindle eliminating unnecessarily / risky handling of any remaining optical fibre cable slack. The reel also features an inner compartment with duplex (LC) or simplex (SC / LC) flangeless optical adaptor mounts.



### Design Features

#### ITB enclosure

- ✿ Enclosure housing white ABS.
- ✿ 2 x openings / ports at the bottom of the ITB housing with rubber cable gland.
- ✿ 2 x openings per side (right /left and top) for 24 x 15 mm trunking.
- ✿ Unique built in reel / drum spindle for managing plastic reel with cable slack.

#### Plastic reel

- ✿ Durable ABS plastic reel.
- ✿ \*Accommodates up to 100m of cable slack.

This document is intended as a guide only. Whilst the information it contains is believed to be correct, Emtelle can take no responsibility for actions taken based on the information contained in this document. Emtelle reserves the right to make changes to this document without notice. Purchase of Emtelle products does not convey any licence under patents or other intellectual property rights owned by third parties. All sales of product are subject to Emtelle's terms and conditions of sale only, which can be found on Emtelle's website. This document is protected by copyright (c) Emtelle Group [2024]. The products depicted are protected by intellectual property rights. Any unauthorized copying of this document or of our products is prohibited and Emtelle UK Limited will take action to prevent any infringement of its rights and to claim damages for the loss that it suffers. [www.emtelle.com](http://www.emtelle.com)

## UK\_DS\_Internall\_Termination\_Box

- ⊗ \*Stores up to 1000m of terminated cable using interlocking cardboard flanges.
- ⊗ Inner reel compartment ideal for storing optical connectors. (protecting optical connectors during installation)
- ⊗ Inner reel compartment features 2 mounting point (per side) for either SC or LC adaptors / couplers (simplex SC / LC and /or duplex LC)
- ⊗ Fits flangeless adaptor type.

\*Emtelles FibreFast microcable used for capacity calculations – enquire about our **FibreFast™** microcable range or **QWKlink™** terminated cables range.

### Application Notes

The Emtelle ITB can be used as a network demarcation point with in the customer home. The ITB enclosure is a wall mountable enclosure that can be installed within the customer property or basement.

The enclosure can be fitted with the slack storage reel on day one or supplied empty – ready for cable installation with bespoke lengths of cable on the reels with cardboard flanges.

The reel can be removed completely or placed in 2 positions on the ITB's spindle.

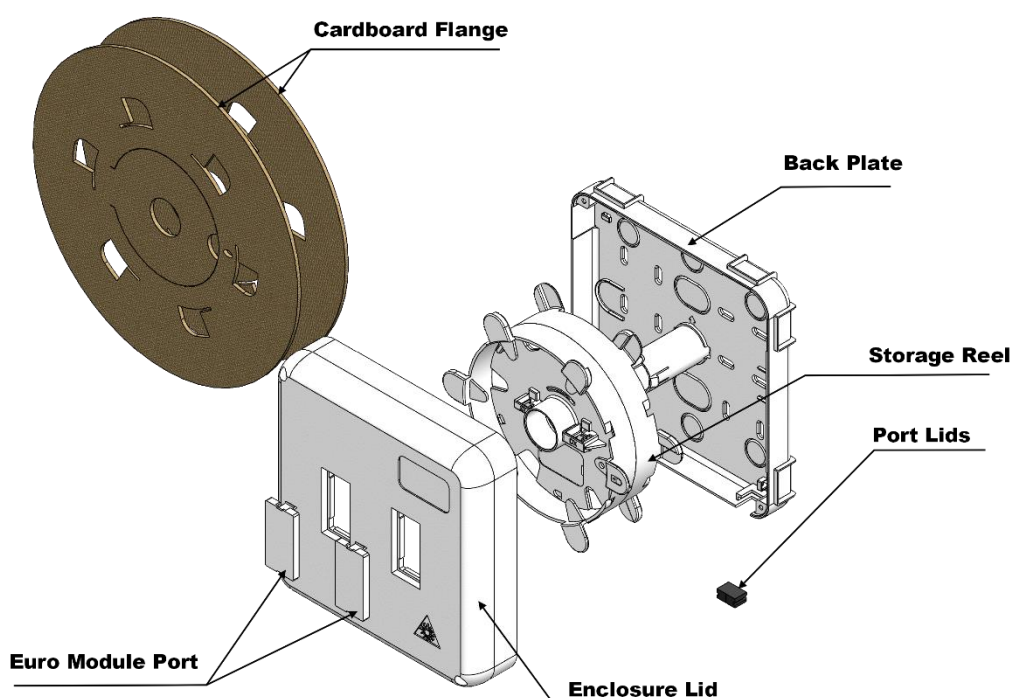
- Position 1: Outer Position – for winding on excess fibre.
- Position 2: Seated on Backplate – rotation locked for storage.

Emtelle QWKlink solution can be supplied onto the plastic reel with cardboard flanges. (pre-terminated optical fibre cable)

### Layout

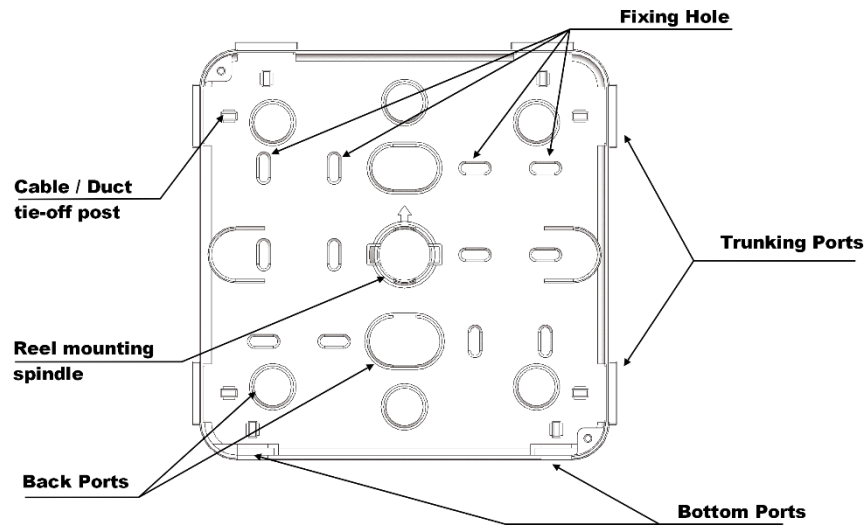
**Full solution:**

**Back plate:**



This document is intended as a guide only. Whilst the information it contains is believed to be correct, Emtelle can take no responsibility for actions taken based on the information contained in this document. Emtelle reserves the right to make changes to this document without notice. Purchase of Emtelle products does not convey any licence under patents or other intellectual property rights owned by third parties. All sales of product are subject to Emtelle's terms and conditions of sale only, which can be found on Emtelle's website. This document is protected by copyright (c) Emtelle Group [2024]. The products depicted are protected by intellectual property rights. Any unauthorized copying of this document or of our products is prohibited and Emtelle UK Limited will take action to prevent any infringement of its rights and to claim damages for the loss that it suffers. [www.emtelle.com](http://www.emtelle.com)

## UK\_DS\_Internall\_Termination\_Box

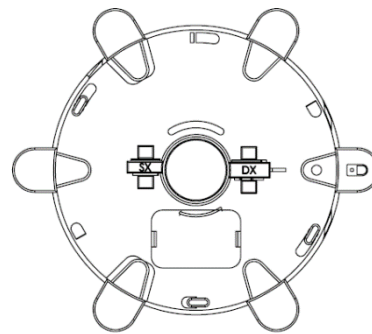
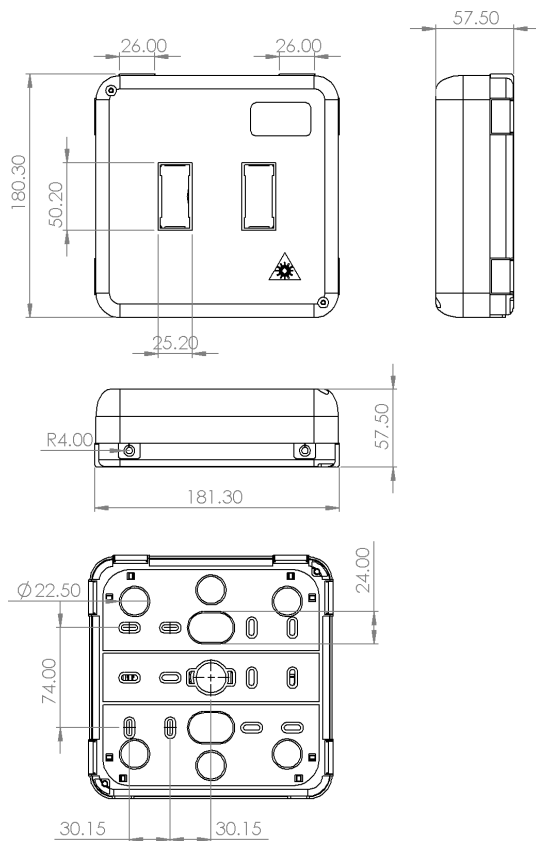


### Specifications

#### Dimensions:

Enclosure: 180.30mm x 180.30mm x 57.50mm

Reel: 164mm x 49.3mm



Reel With cardboard flange:

Barrel diameter:	130mm
Spindel diameter:	27mm
Barrel width:	40mm
Flange diameter:	235mm

#### Materials:

ITB enclosure	ABS (white)
Enclosure colours	White
Storage Reel	ABS (white)

This document is intended as a guide only. Whilst the information it contains is believed to be correct, Emtelle can take no responsibility for actions taken based on the information contained in this document. Emtelle reserves the right to make changes to this document without notice. Purchase of Emtelle products does not convey any licence under patents or other intellectual property rights owned by third parties. All sales of product are subject to Emtelle's terms and conditions of sale only, which can be found on Emtelle's website. This document is protected by copyright (c) Emtelle Group [2024]. The products depicted are protected by intellectual property rights. Any unauthorized copying of this document or of our products is prohibited and Emtelle UK Limited will take action to prevent any infringement of its rights and to claim damages for the loss that it suffers. [www.emtelle.com](http://www.emtelle.com)

## UK\_DS\_Internall\_Termination\_Box

### Products

Description	Emtelle Product Code
<b>Internal Termination Box - ITB - White</b> ( <i>Empty - no reel</i> )	TBA
<b>Internal Termination Box - ITB - White</b> ( <i>with inner reel</i> )	TBA
<b>ETB/ITB Reel (2 flanges and empty core)</b> <i>for Emtelle to make into Pre-term reels</i>	TBA
<b>ETB/ITB Reel (just empty core - not assembled)</b> <i>for fitting old reels onto new reels for ETB</i>	TBA

### Packaging and Labelling

All products suitably packaged in recyclable materials and clearly labelled with Emtelle Product Code and Description where possible.

### END OF SPECIFICATION