

TENIO™ Fibre Closures



Product Description

TENIO™ closures feature modular building blocks and combine proven fibre management hardware with a new sealing system to simplify training and reduce inventory. The closure's 100-percent mechanical, tool-less and intuitive design facilitates lower-skilled network deployments.

Full modularity of the closure platform supports a phased CAPEX network deployment scheme, reducing up-front CAPEX investment.

CommScope's superior gel-sealing technology guarantees sealing for most commonly available cable types.

Application

Designed for use with various cable constructions (loose buffer tube and micro sheath), the closures deploy in any environment (aerial, pedestal, handhole, manhole).

Features

- Reduce total cost of ownership
Tool-less, intuitive design assures rapid installation and easy on-going maintenance by less technical workforce
- Optimize cash flow and ROI
Modular closure platform allows phased network deployment, lower initial CAPEX expenditure
- Fibre and cable technology independent

This document is intended as a guide only. Whilst the information it contains is believed to be correct, Emtelle can take no responsibility for actions taken based on the information contained in this document. Emtelle reserves the right to make changes to this document without notice. All sales of product are subject to Emtelle's terms and conditions of sale only, which can be found on Emtelle's website.

This document is protected by copyright (c) Emtelle Group [2020]. The products depicted are protected by intellectual property rights. Any unauthorized copying of this document or of our products is prohibited and Emtelle UK Limited will take action to prevent any infringement of its rights and to claim damages for the loss that it suffers.

www.emtelle.com

UK DS TENIO™

Issue 4: 11/09/2020

Page 2 of 6

Ordering

To configure a complete TENIO™ closure, the following items must be specified and ordered as indicated:

- Closure:** TENIO™ closures ship with a number of splice trays; order separate splice trays to complete partially loaded closures.
- Cable Seals:** Total number of cable seals per closure MUST equal 6.
- Cable Termination units:** Order 1 cable termination unit for each cable; looped cables require 2 cable termination units.
- External cable fixation bracket:** Order 1 per closure.

Split Dome with Edge Seal

Faster entry and re-entry

- Just 2 side latches, easily operated manually, achieving a 30% faster entry and re-entry than industry standard today

Superior quality

- Based on same materials as used for many years in FIST™ GCO2 and FOSS™ 400 products

Universal applicability

- Suited for underground, ground level and aerial use



B6 Closure Max 12x12F splice trays (144F)			C6H Closure Max 12 x 24F splice trays (288F)		
Dome	Configuration	Product code	Dome	Configuration	Product code
B6-S12-4	4X12f TRAY	75056	C6H-SLE-8	8x24f TRAY	
B6-S12-8	8X12f TRAY	75434	C6H-SLE-12	12X24f TRAY	
B6-S12-12	12X12f TRAY				

This document is intended as a guide only. Whilst the information it contains is believed to be correct, Emtelle can take no responsibility for actions taken based on the information contained in this document. Emtelle reserves the right to make changes to this document without notice. All sales of product are subject to Emtelle's terms and conditions of sale only, which can be found on Emtelle's website.

This document is protected by copyright (c) Emtelle Group [2020]. The products depicted are protected by intellectual property rights. Any unauthorized copying of this document or of our products is prohibited and Emtelle UK Limited will take action to prevent any infringement of its rights and to claim damages for the loss that it suffers.

www.emtelle.com

UK DS TENIO™

Issue 4: 11/09/2020

Page 3 of 6

TENIO™ Cable Seal (6 required)

Superior sealing performance

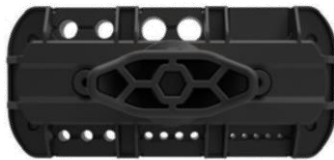
- Best available mechanical seal on the market
- 20 kPa and 2 m waterhead compliant with prEN50411-2-10

Easy Installation

- 60 seconds assembly
- First fully wrap-around, 100% mechanical seal ever introduced into the market
- Installation feedback (Go/No Go trigger activation)
- Tool-less installation

Flexibility and customization

- Segments are interchangeable
- Field-installable
- Diameter range from 2 - 16 mm



	Cable Outs	Diameter Range	Product code
	2	13-16	75047
	2	11-14	75048
	2	9-12	75049
	3	7-10	75050
	3	5-8	75051
	3 flat	3/5x6/9	75052
	4	3-6	75053
	5	2-4	75054
	0	Dummy	75055

This document is intended as a guide only. Whilst the information it contains is believed to be correct, Emtelle can take no responsibility for actions taken based on the information contained in this document. Emtelle reserves the right to make changes to this document without notice. All sales of product are subject to Emtelle's terms and conditions of sale only, which can be found on Emtelle's website.

This document is protected by copyright (c) Emtelle Group [2020]. The products depicted are protected by intellectual property rights. Any unauthorized copying of this document or of our products is prohibited and Emtelle UK Limited will take action to prevent any infringement of its rights and to claim damages for the loss that it suffers.

www.emtelle.com

UK DS TENIO™

Issue 4: 11/09/2020

Page 4 of 6

TENIO™ Cable Termination (1 required per cable)

Superior performance

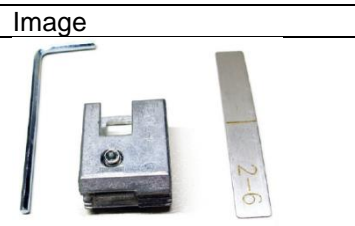
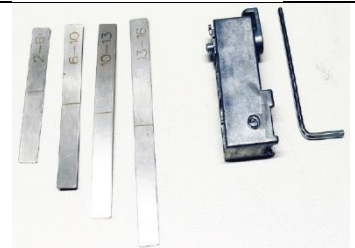
- Best universal cable termination on the market
- Stronger than T-wraps, safer than hose clamps (no cable damage)

Easy Installation

- Fully wrap-around
- Only 1 Allen key needed
- Universal housing in closure (black inserts after segmented gel block)

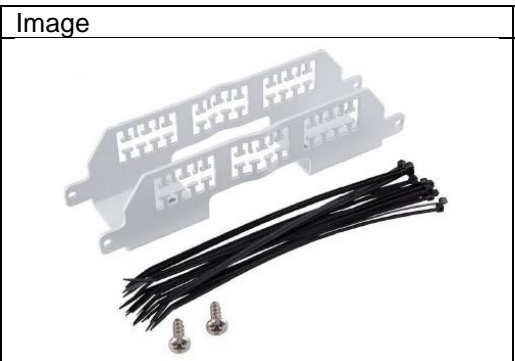
Cable construction independent

- Diameter range from 2 – 16 mm
- Central/dual strength member and aramid yarn termination

Item	Image	Cable range	Product code
CTU-S		2-6mm	75059
CTU-L		5-16mm	75058

External Fixation Bracket (1 required per Tenio)

Provides a location to secure incoming and outgoing cables.

Item	Image	Product code
External cable fixation bracket		75091

This document is intended as a guide only. Whilst the information it contains is believed to be correct, Emtelle can take no responsibility for actions taken based on the information contained in this document. Emtelle reserves the right to make changes to this document without notice. All sales of product are subject to Emtelle's terms and conditions of sale only, which can be found on Emtelle's website.

This document is protected by copyright (c) Emtelle Group [2020]. The products depicted are protected by intellectual property rights. Any unauthorized copying of this document or of our products is prohibited and Emtelle UK Limited will take action to prevent any infringement of its rights and to claim damages for the loss that it suffers.

www.emtelle.com

UK DS TENIO™

Issue 4: 11/09/2020

Page 5 of 6

Fibre Management (order extra to complete partially loaded closure)

Reduced installation time

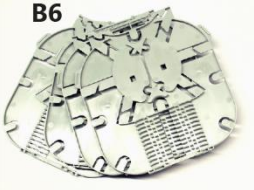

- Optimized FIST™ fibre management system leading to 30% faster and more intuitive fibre routing and installation
- Up to 144 (12 x 12 fibres), 192 (8 x 24 fibres) or 288 (12 x 24 fibres) fibre splices, closure dependant.

Dedicated storage locations

- Separate location for optical device storage maintains full splice capacity
- Storage basket for looped cable with tubes up to 2.4 mm in diameter
- Integrated basket for drop cable, spare fibre storage

Fibre and cable technology independent

- Compatible with G652D fibre
- Minimum 1.2 m overlength storage per splice side
- Control fibre/tube grow-out for up to +20 mm

Item	Image	Product code
Tenio B6 tray	 <p>B6</p>	
Tenio C6H tray	 <p>C6</p>	

This document is intended as a guide only. Whilst the information it contains is believed to be correct, Emtelle can take no responsibility for actions taken based on the information contained in this document. Emtelle reserves the right to make changes to this document without notice. All sales of product are subject to Emtelle's terms and conditions of sale only, which can be found on Emtelle's website.

This document is protected by copyright (c) Emtelle Group [2020]. The products depicted are protected by intellectual property rights. Any unauthorized copying of this document or of our products is prohibited and Emtelle UK Limited will take action to prevent any infringement of its rights and to claim damages for the loss that it suffers.

www.emtelle.com

UK DS TENIO™

Issue 4: 11/09/2020


Page 6 of 6

Optional/Additional Ordering Information

To configure a complete TENIO™ closure, the following items must be specified and ordered as indicated:

Accessories:

Mounting Bracket: Order 1 mounting bracket per closure

Item	Image	Product code
Tenio Mobra		75435

Pre-kitted microducts:

Lengths of microduct tails pre-fitted into the base of the dome via appropriate cable seals. No microduct fitting required on site just connect the tail to your installed microduct via a push-fit connector.

Patch Trays:

Order these trays for retrofit in TENIO™-B6 or TENIO™-C6H closures. These trays provide test/monitoring points.

Adapters are ordered separately; only adapters without flanges fit in these patch trays.

Field installable splitter sub-assemblies:

A dedicated storage area is used to house splitter holders in the TENIO closure.

Small holders	1:2	2:2
	1:8	2:8
	1:16	-
Large holders	-	2:16
	1:32	2:32
	1:64	2:64

Closure Size	Maximum number of small holders	Maximum number of large holders
Tenio-B6	8	0
	5	1
	2	2
Tenio-C6H	15	0
	12	1
	8	2
	5	3
	2	4



Item	Details	Product code
OCC1P-10400-NNNQNQF	1:4 PLC, stub tail input and outputs	75513
OCC1P-10800-NNNQNQF	1:8 PLC, stub tail input and outputs	75514
OCC1P-11600-NNNQNQF	1:16 PLC, stub tail input and outputs	75515
OCC1P-13200-NNNQNQF	1:32 PLC, stub tail input and outputs	75516

This document is intended as a guide only. Whilst the information it contains is believed to be correct, Emtelle can take no responsibility for actions taken based on the information contained in this document. Emtelle reserves the right to make changes to this document without notice. All sales of product are subject to Emtelle's terms and conditions of sale only, which can be found on Emtelle's website.

This document is protected by copyright (c) Emtelle Group [2020]. The products depicted are protected by intellectual property rights. Any unauthorized copying of this document or of our products is prohibited and Emtelle UK Limited will take action to prevent any infringement of its rights and to claim damages for the loss that it suffers.

www.emtelle.com